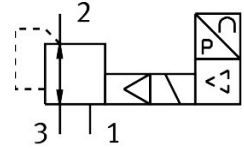


Precision pressure regulator MS6-LRP-1/2-PI10-VS

Part number: 8203862

FESTO



Data sheet

Feature	Value
Size	6
Series	MS
Mounting position	Any
Structural design	pilot-controlled piston control valve
Controller function	Outlet pressure constant With secondary exhausting
Operating pressure	0.6 MPa...1.1 MPa 6 bar...11 bar
Pressure regulation range	0.1 bar...10 bar
Max. pressure hysteresis	0.05 bar
Standard nominal flow rate	9000 l/min
DC operating voltage range	21.6 V...26.4 V
Max. electrical power consumption	4.2 W
Max. current consumption	0.16 A
Nominal operating voltage DC	24 V
Residual ripple	10 %
Analog input signal range	4 - 20 mA
CE marking (see declaration of conformity)	As per EU EMC directive As per EU RoHS directive
UKCA marking (see declaration of conformity)	To UK instructions for EMC To UK RoHS instructions
Operating medium	Compressed air as per ISO 8573-1:2010 [7:4:4] Inert gas
Information on operating and pilot media	Ester oil < 0.1mg/m ³ , according to ISO 8573-1:2010 [---:2] Operation with oil lubrication not possible
Corrosion resistance class (CRC)	2 - Moderate corrosion stress
LABS (PWIS) conformity	VDMA24364-B1/B2-L
Storage temperature	-10 °C...60 °C
Temperature of medium	10 °C...50 °C
Ambient temperature	0 °C...60 °C
Product weight	800 g
Type of mounting	Line installation With accessories Optionally:

Feature	Value
Pneumatic connection 1	G1/2
Pneumatic connection 2	G1/2
Pneumatic connection 3	G1/4
Note on materials	RoHS-compliant
Seals material	NBR
Housing material	Aluminum