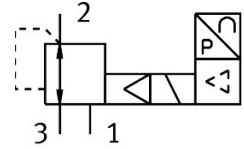


Precision pressure regulator MS6-LRP-1/2-PE10-VS

Part number: 8203861

FESTO



Data sheet

| Feature | Value |
|--|---|
| Size | 6 |
| Series | MS |
| Mounting position | Any |
| Structural design | pilot-controlled piston control valve |
| Controller function | Outlet pressure constant With secondary exhausting |
| Operating pressure | 0.6 MPa...1.1 MPa 6 bar...11 bar |
| Pressure regulation range | 0.1 bar...10 bar |
| Max. pressure hysteresis | 0.05 bar |
| Standard nominal flow rate | 9000 l/min |
| DC operating voltage range | 21.6 V...26.4 V |
| Max. electrical power consumption | 4.2 W |
| Max. current consumption | 0.16 A |
| Nominal operating voltage DC | 24 V |
| Residual ripple | 10 % |
| Analog input signal range | 0 - 10 V |
| CE marking (see declaration of conformity) | As per EU EMC directive As per EU RoHS directive |
| UKCA marking (see declaration of conformity) | To UK instructions for EMC To UK RoHS instructions |
| Operating medium | Compressed air as per ISO 8573-1:2010 [7:4:4] Inert gas |
| Information on operating and pilot media | Ester oil < 0.1mg/m ³ , according to ISO 8573-1:2010 [:-:2] Operation with oil lubrication not possible |
| Corrosion resistance class (CRC) | 2 - Moderate corrosion stress |
| LABS (PWIS) conformity | VDMA24364-B1/B2-L |
| Storage temperature | -10 °C...60 °C |
| Temperature of medium | 10 °C...50 °C |
| Ambient temperature | 0 °C...60 °C |
| Product weight | 800 g |
| Type of mounting | Line installation With accessories Optionally: |

| Feature | Value |
|------------------------|----------------|
| Pneumatic connection 1 | G1/2 |
| Pneumatic connection 2 | G1/2 |
| Pneumatic connection 3 | G1/4 |
| Note on materials | RoHS-compliant |
| Seals material | NBR |
| Housing material | Aluminum |