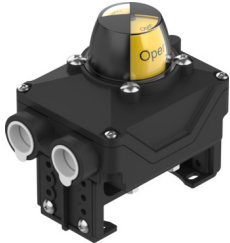


# Limit switch box SRBK-CA4-YR90-MW-1-1WG-C2

Part number: 8191214

**FESTO**



## Data sheet

| Feature  | Value   |
|--|---|
| CE marking (see declaration of conformity)                               | As per EU EMC directive<br>As per EU low voltage directive<br>As per EU RoHS directive  |
| UKCA marking (see declaration of conformity)                             | To UK instructions for EMC<br>To UK RoHS instructions<br>To UK instructions for electrical equipment                                |
| Note on materials  | RoHS-compliant  |
| Measured variable  | Position  |
| Measuring principle  | Mechanical/electrical   |
| Sensing range  | 0 deg...90 deg  |
| Ambient temperature  | -20 °C...70 °C  |
| Switching output   | Contact-based (gold)  |
| Switching element function   | Toggle switch, single-pin   |
| Max. switching output voltage DC   | 30 V  |
| Max. output current DC   | 100 mA  |
| Max. switching capacity DC   | 3 W   |
| DC operating voltage range   | 0 V...30 V  |
| Microswitch type   | Omron SS-01   |
| Electrical connection  | Screw terminal  |
| Electrical connection 1, connection type                                 | Terminal strip  |
| Electrical connection 1, cable outlet                                    | Straight  |
| Electrical connection 1, design  | Rectangular   |
| Electrical connection 1, connection technology                           | Screw terminal  |
| Electrical connection 1, number of pins/wires                            | 10  |
| Closable nominal conductor cross-section                                 | 0.25 mm²...2.5 mm²  |
| Cable fitting  | M20x1.5   |
| Dimensions W x L x H   | 130 mm x 85 mm x 128 mm<br>130 mm x 85 mm x 138 mm<br>130 mm x 85 mm x 158 mm<br>147 mm x 85 mm x 128 mm<br>147 mm x 85 mm x 138 mm |
| Connection point for positioner and position sensor conforms to standard | VDI/VDE 3845 size AA 1<br>VDI/VDE 3845 size AA 2<br>VDI/VDE 3845 size AA 3  |

| Feature                          | Value  |
|----------------------------------|--|
| Mounting position                | Any  |
| Product weight                   | 460 g  |
| Housing colour                   | Black  |
| Housing material                 | PA   |
| Seals material                   | NBR  |
| Shaft material                   | PA   |
| Material of screws               | Stainless steel  |
| Material of mounting bracket     | PA   |
| Circlip material                 | High-alloy stainless steel   |
| Protective cap material          | PC   |
| Switching status indication      | Optical  |
| Position indicator               | Yellow/red   |
| Angle detection setting range    | 0 deg...90 deg   |
| Storage temperature              | -20 °C...50 °C   |
| Degree of protection             | IP66<br>IP67   |
| Shock resistance                 | Shock test with severity level 1 as per FN 942017-5 and EN 60068-2-27                |
| Vibration resistance             | Transport application test with severity level 1 as per FN 942017-4 and EN 60068-2-6 |
| Corrosion resistance class (CRC) | 3 - High corrosion stress  |
| LABS (PWIS) conformity           | VDMA24364 zone III   |
| Contamination level              | 3  |