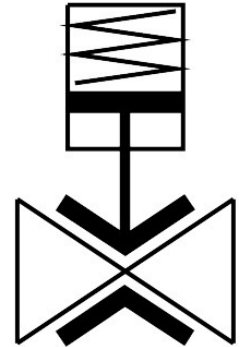
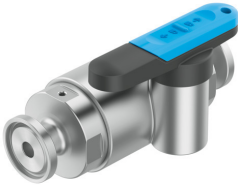


**Pinch valve**  
**VZQH-2H-6-S5S5-V4V4S1PM-2**  
 Part number: 8187049

**FESTO**



## Data sheet

Feature	Value
Structural design	Pinch valve
Actuation type	Manual
Sealing principle	Soft
Mounting position	Any
Type of mounting	Line installation
Fitting connection	Clamp as per DIN 32676 series A
Nominal width DN	6
Valve function	2/2, closed, monostable
Flow direction	Reversible
Medium pressure	0 MPa...0.2 MPa 0 bar...2 bar 0 psi...29 psi
Nominal pressure of fitting PN	10
Burst pressure	1.6 MPa 16 bar 232 psi
Reset method	Mechanical spring
Type of control	Direct
Medium	Compressed air as per ISO 8573-1:2010 [-:::1] Water
Max. viscosity	4000 mm <sup>2</sup> /s
Temperature of medium	-5 °C...100 °C
Ambient temperature	-5 °C...60 °C
Storage temperature	5 °C...30 °C
Flow rate Kv	0.7 m <sup>3</sup> /h
On switching time	1000 ms
Switching time off	1000 ms
Note on materials	RoHS-compliant

Feature	Value
LABS (PWIS) conformity	VDMA24364 zone III
Housing material	High-alloy stainless steel
Material number of housing	1.4408
Housing cover material	High-alloy stainless steel
Material no. housing cover	1.4404 / AISI 316L
Seals material	FPM HNBR
Shut-off element material	VMQ (silicone)
Product weight	427 g
For use in the food industry	See supplementary material information See declaration of conformity