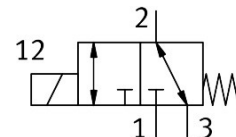


Media separated solenoid valve VYKC-F16-M32-20-PE-H2R

Part number: 817 2698

FESTO



Data sheet

Feature	Value
Structural design	Electrical connection at side Rocker valve with diaphragm seal
Sealing principle	Soft
Materials in contact with the media	EPDM PEEK
For use in the food industry	See supplementary material information
Valve function	3/2, open/closed, monostable
Nominal width	2 mm
Flow direction	Reversible
Actuation type	Electrical
Type of control	Direct
Reset method	Mechanical spring
Manual override	None
Mounting position	Any
Type of mounting	With through-hole for M2.5 screw
Electrical connection 1, connection type	Cable with plug
Electrical connection 1, connection technology	Connection diagram H
Size	16
Width dimension	17 mm
Fluid connector	Flange
Medium	Liquid media Gaseous media
Information on medium	Observe resistance of materials that come into contact with media Maximum particle size 5 µm
Internal volume	59 µl fluid chamber valve 94 µl valve with fl. conn.
Temperature of medium	0 °C...50 °C
Temperature of liquid media	0 °C...50 °C
Ambient temperature	0 °C...50 °C
Storage temperature	-20 °C...70 °C
Medium pressure	-0.075 MPa...0.2 MPa -0.75 bar...2 bar -10.875 psi...29 psi

Feature	Value
Burst pressure	2 MPa 20 bar 290 psi
Total leakage	4 ml/h
DC operating voltage range	12 V...24 V
Permissible voltage fluctuations	+/- 10 %
Note on power consumption	Low-current phase 1.4 W, high-current phase 5.5 W for 100 ms
Coil characteristics	12 - 24 V DC: low-current phase 1.4 W, high-current phase 5.5 W
Insulation class	B
Duty cycle	100% in combination with holding current reduction Follow the instructions on operating the air solenoid valves.
Max. switching frequency	4 Hz
Note on switching frequency	Dependent on the ambient temperature and installation state
Response time "on" for liquid media	17 ms
Switching time on gaseous media	13 ms
Response time "off" for liquid media	12 ms
Switching time off gaseous media	3 ms
Standard nominal flow rate	62 l/min
Note on standard nominal flow rate	At a pressure drop of 1 -> 0 bar (gaseous media)
Flow rate Kv	0.046 m³/h 0.77 l/min
Note on flow rate Kv	For the medium water Pressure difference 1 bar
Water flow rate at max. operating pressure	0.07 m³/h 1.2 l/min
Housing material	PEEK
Diaphragm material	EPDM
Seals material	EPDM
Note on materials	RoHS-compliant
LABS (PWIS) conformity	VDMA24364 zone III
Product weight	50 g
Degree of protection	IP40
Note on degree of protection	In mounted state
Application note	For indoor use only
Corrosion resistance class (CRC)	0 - No corrosion stress
Certification	RCM compliance mark
CE marking (see declaration of conformity)	As per EU EMC directive As per EU RoHS directive
UKCA marking (see declaration of conformity)	To UK instructions for EMC To UK RoHS instructions