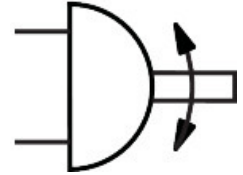
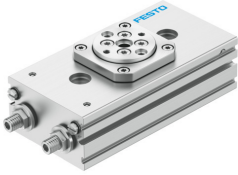


# Semi-rotary drive DRRS-12-180-FH-PA

Part number: 8163607

**FESTO**



## Data sheet

Feature	Value
Size	12
Cushioning angle	23.5 deg
Setting range of swivel angle for each end position	+10 / -100 deg
Axial eccentricity of plate	0.05 mm
Swivel angle	180 deg
Min. swivel angle	45 deg
Max. swivel angle	200 deg
Cushioning	Elastic cushioning rings/pads at both ends
Mounting position	Any
Structural design	Gear rack/pinion
Position sensing	For proximity sensor
Operating pressure	0.3 MPa...0.8 MPa 3 bar...8 bar
Repetition accuracy	0.05 deg
Mode of operation	Double-acting
Operating medium	Compressed air as per ISO 8573-1:2010 [7:4:4]
Information on operating and pilot media	Operation with oil lubrication possible (required for further use)
Corrosion resistance class (CRC)	1 - Low corrosion stress
LABS (PWIS) conformity	VDMA24364-C1-L
Suitability for the production of Li-ion batteries	Product corresponds to Festo's internal product definition for use in battery production: Metals with more than 1% by mass of copper, zinc or nickel are excluded from use. The exceptions are nickel in steel, chemically nickel-plated surfaces, circuit boards, cables, electrical plug connectors and coils
Cleanroom class	Class 9 according to ISO 14644-1
Storage temperature	-20 °C...60 °C
Ambient temperature	0 °C...60 °C
Theoretical torque at 6 bar	0.9 Nm
Permissible mass moment of inertia	0.005 kgm <sup>2</sup>
Max. bending moment	2 Nm
Max. axial load static	80 N
Product weight	310 g

Feature	Value
Type of mounting	With mounting kit With through-hole With internal thread Optionally:
Pneumatic connection	M3
Note on materials	RoHS-compliant
Seals material	NBR TPE-U(PU)
Housing material	Aluminum, anodized
Flange shaft material	Wrought aluminum alloy
Pinion material	Tempered steel