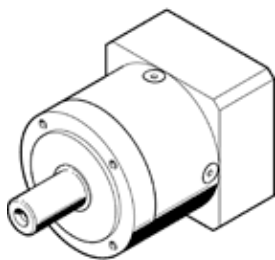


# Gearbox EMGA-80-P-G12-SST-87

Part number: 8141767

FESTO



## Data sheet

Feature	Value
Gear unit flange size	80 mm
Motor flange size	87 mm
Torsional backlash	0.15 deg
Type of gear unit	Planetary gear unit
Gear unit ratio	12:1
Max. input speed	7,000 1/min
Temperature range of gear unit	-25 ... 90 °C
PWIS conformity	VDMA24364-B2-L
Protection class	IP54
Continuous output torque	120 Nm
Mass moment of inertia of gear unit	0.589 kgcm <sup>2</sup>
Max. output torque	192 Nm
Max. efficiency	97 %
Torsional resistance	10.4 Nm/arcmin
Product weight	2,600 g
Gear unit interface, output shaft	80G
Gear unit interface, drive shaft	87A
Materials note	Conforms to RoHS