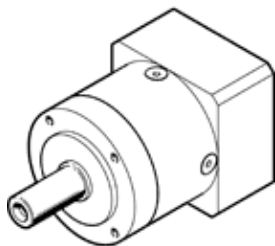


Gearbox EMGA-60-P-G12-EAS-60

Part number: 8141736

FESTO



Data sheet

Feature	Value
Gear unit flange size	60 mm
Motor flange size	60 mm
Torsional backlash	0.2 deg
Type of gear unit	Planetary gear unit
Gear unit ratio	12:1
Max. input speed	13,000 1/min
Temperature range of gear unit	-25 ... 90 °C
PWIS conformity	VDMA24364-B2-L
Protection class	IP54
Continuous output torque	44 Nm
Mass moment of inertia of gear unit	0.138 kgcm ²
Max. output torque	70 Nm
Max. efficiency	96 %
Torsional resistance	2.8 Nm/arcmin
Product weight	1,100 g
Gear unit interface, output shaft	60H
Gear unit interface, drive shaft	60P
Materials note	Conforms to RoHS