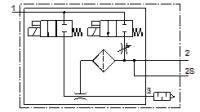
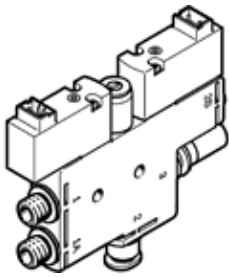


Vacuum generator

OVEL-5-H-10-P-VQ4-UC-C-A-H3

Part number: 8141094

FESTO



Data sheet

Feature	Value
Nominal size, Laval nozzle	0.45 mm
Grid dimension	10 mm
Design, silencer	closed
Assembly position	Any
Ejector characteristic	High vacuum Standard
Grade of filtration	40 µm
Manual override	Pushing
Integrated function	Ejector pulse, electrical Flow control valve Electrical on-off valve Filter Silencer closed
Design structure	T-shaped
Valve function	closed
Operating pressure for max. suction rate (MPa)	0.3 MPa
Working pressure for max. suction rate	3 bar
Operating pressure for max. suction rate (psi)	43.5 psi
Operating pressure MPa	0.2 ... 0.7 MPa
Working pressure	2 ... 7 bar
Operating pressure	29 ... 101.5 psi
Operating pressure for max. vacuum (MPa)	0.44 MPa
Working pressure for max. vacuum	4.4 bar
Operating pressure for max. vacuum (psi)	63.8 psi
Max. vacuum	89 %
Nominal operating pressure	0.4 MPa
Nominal working pressure	4 bar
Nominal operating pressure (psi)	58 psi
Max. suction rate with respect to atmosphere	4 l/min
Air supply time at nominal operating pressure with ejector pulse	2 s
Operating voltage range DC	21.6 ... 26.4 V
Duty cycle	100 %
Characteristic coil data	24 V DC: 1 W
Authorization	c UL us - Listed (OL)
CE symbol (see declaration of conformity)	according to EU-EMV guideline
Operating medium	Compressed air in accordance with ISO8573-1:2010 [7:4:4]
Note on operating and pilot medium	Lubricated operation not possible
Corrosion resistance classification CRC	2 - Moderate corrosion stress
PWIS conformity	VDMA24364-B1/B2-L
Medium temperature	0 ... 50 °C
Noise level at nominal operating pressure	51 dB(A)
Protection class	IP40
Ambient temperature	0 ... 50 °C
Product weight	40 g
Electrical connection, input, function	Ejector pulse Vacuum generation

Feature	Value
Electrical connection, input, connection type	2x plug
Electrical connection, input, connection technology	Connection pattern H
Electrical connection, input, number of pins/wires	2
Electrical connection, input, type of mounting	Snap-in locking
Mounting type	on manifold rail
Pneumatic connection, port 1	Common line
Pneumatic connection, port 3	Silencer closed
Vacuum connection	For tubing outside diameter 4 mm
Material of connecting thread	POM
Materials note	Conforms to RoHS
Material seals	NBR
Material receiver nozzle	POM
Material filter	POM
Material housing	PA-reinforced
Material hollow bolt	Wrought Aluminum alloy
Material adjusting screw	Steel
Material silencer	PA-reinforced PE
Material screws	Steel
Material transmitter nozzle	Wrought Aluminum alloy