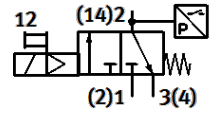
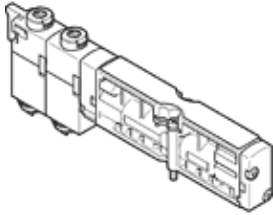


Solenoid valve

VMPA1-M1H-EU-PI

Part number: 8126793

FESTO



Data sheet

| Feature | Value |
|---|--|
| Valve function | 3/2 closed, monostable |
| Type of actuation | electrical |
| Valve size | 10 mm |
| Operating pressure MPa | 0.3 ... 0.8 MPa |
| Working pressure | 3 ... 8 bar |
| Design structure | Poppet valve with spring return |
| Type of reset | mechanical spring |
| Protection class | IP65 in assembled condition to IEC 60529 |
| Sealing principle | soft |
| Assembly position | Any |
| Manual override | detenting Pushing |
| Type of piloting | Piloted |
| Pilot air supply | external |
| Flow direction | non reversible |
| Lap | Underlap |
| Signal status display | Yes |
| Pilot pressure MPa | 0.3 ... 0.8 MPa |
| Pilot pressure | 3 ... 8 bar |
| Suitability for vacuum | No |
| Permissible voltage fluctuation | +/- 25 % |
| Operating medium | Compressed air in accordance with ISO8573-1:2010 [7:4:4] |
| Note on operating and pilot medium | Lubricated operation not possible |
| Vibration resistance | Transport application test at severity level 2 in accordance with FN 942017-4 and EN 60068-2-6 |
| Shock resistance | Shock test with severity level 2 in accordance with FN 942017-5 and EN 60068-2-27 |
| Corrosion resistance classification CRC | 1 - Low corrosion stress |
| PWIS conformity | VDMA24364 zone III |
| Storage temperature | -20 ... 60 °C |
| Medium temperature | -5 ... 50 °C |
| Relative air humidity | Max. 90% at 40°C |
| Ambient temperature | -5 ... 50 °C |
| Max. tightening torque, valve mounting | 0.65 Nm |
| Product weight | 32 g |
| Mounting type | with through hole |
| Auxiliary pilot air port 12/14 | M7 |
| Pilot exhaust port 82/84 | M7 |
| Pneumatic connection, port 1 | M7 |
| Pneumatic connection, port 2 | Internal |
| Pneumatic connection, port 3 | M7 |
| Materials note | Conforms to RoHS |
| Material seals | HNBR NBR |
| Material housing | PPA amplified |
| Material screws | Coated steel |