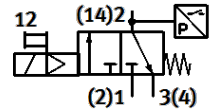
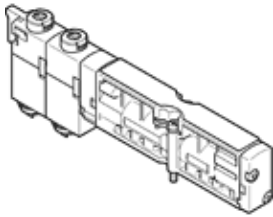


Solenoid valve

VMPA1-M1H-ES-PI

Part number: 8126791

FESTO



Data sheet

Feature	Value
Valve function	3/2 closed, monostable
Type of actuation	electrical
Valve size	10 mm
Operating pressure MPa	0.3 ... 0.8 MPa
Working pressure	3 ... 8 bar
Design structure	Poppet valve with spring return
Type of reset	mechanical spring
Protection class	IP65 in assembled condition to IEC 60529
Sealing principle	soft
Assembly position	Any
Manual override	detenting Pushing
Type of piloting	Piloted
Pilot air supply	external
Flow direction	non reversible
Lap	Underlap
Signal status display	Yes
Pilot pressure MPa	0.3 ... 0.8 MPa
Pilot pressure	3 ... 8 bar
Suitability for vacuum	No
Permissible voltage fluctuation	+/- 25 %
Operating medium	Compressed air in accordance with ISO8573-1:2010 [7:4:4]
Note on operating and pilot medium	Lubricated operation not possible
Vibration resistance	Transport application test at severity level 2 in accordance with FN 942017-4 and EN 60068-2-6
Shock resistance	Shock test with severity level 2 in accordance with FN 942017-5 and EN 60068-2-27
Corrosion resistance classification CRC	1 - Low corrosion stress
PWIS conformity	VDMA24364 zone III
Storage temperature	-20 ... 60 °C
Medium temperature	-5 ... 50 °C
Relative air humidity	Max. 90% at 40°C
Ambient temperature	-5 ... 50 °C
Max. tightening torque, valve mounting	0.65 Nm
Product weight	32 g
Mounting type	with through hole
Auxiliary pilot air port 12/14	M7
Pilot exhaust port 82/84	M7
Pneumatic connection, port 1	M7
Pneumatic connection, port 2	Internal
Pneumatic connection, port 3	M7
Materials note	Conforms to RoHS
Material seals	HNBR NBR
Material housing	PPA amplified
Material screws	Coated steel