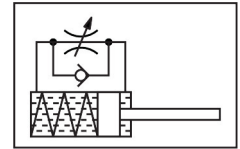


# Shock absorber DYSS-G8-2-4-Y1F-F1A

Part number: 8119980

**FESTO**



## Data sheet

| Feature  | Value   |
|--|---|
| Size   | 2   |
| Stroke   | 4 mm  |
| Cushioning   | Self-adjusting  |
| Mounting position                                  | Any   |
| Position sensing                                   | None  |
| Max. impact velocity                               | 0.5 m/s   |
| Reset time at room temperature                     | 0.5 s   |
| Reset time at min. ambient temperature             | 1 s   |
| Mode of operation                                  | Pushing<br>Single-acting  |
| Corrosion resistance class (CRC)                   | 2 - Moderate corrosion stress   |
| LABS (PWIS) conformity                             | VDMA24364-B2-L  |
| Suitability for the production of Li-ion batteries | Product corresponds to Festo's internal product definition for use in battery production: Metals with more than 1% by mass of copper, zinc or nickel are excluded from use. The exceptions are nickel in steel, chemically nickel-plated surfaces, circuit boards, cables, electrical plug connectors and coils |
| Ambient temperature                                | -10 °C...70 °C  |
| Cushioning length                                  | 4 mm  |
| Max. stop force                                    | 60 N  |
| Max. tightening torque                             | 0.4 Nm  |
| Max. energy absorption per stroke                  | 0.1 J   |
| Max. energy absorption per hour                    | 270 J   |
| Max. residual energy                               | 0.003 J   |
| Resetting force                                    | 0.4 N   |
| Min. insertion force                               | 2.5 N   |
| Product weight                                     | 3.9 g   |
| Load range   | 0.8 kg  |
| Type of mounting                                   | With threaded sleeve  |
| Note on materials                                  | RoHS-compliant  |
| Seals material                                     | NBR   |
| Housing material                                   | High-alloy steel  |
| Piston rod material                                | High-alloy steel  |

