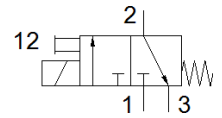
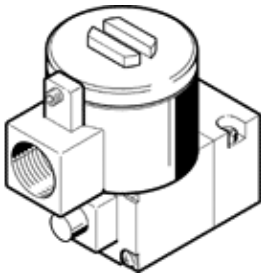


Pilot valve

MGXDH-3/2-H-T-1.2-110DC-EX

Part number: 8118346

FESTO



Data sheet

Feature	Value
Valve function	3/2 closed, monostable
Type of actuation	electrical
Operating pressure MPa	-0.09 ... 0.8 MPa
Working pressure	-0.9 ... 8 bar
Operating pressure	-13.05 ... 116 psi
Design structure	On/off valve
Type of reset	mechanical spring
CE symbol (see declaration of conformity)	according to EU-Ex protection guideline (ATEX)
Explosion protection certification outside the EU	EPL Db (CN) EPL Db (IEC-EX) EPL Gb (CN) EPL Gb (IEC-EX)
Certificate issuing department	ATEX: CML 15 ATEX 1119X IEC: IECEX CML 17.0147X
ATEX category Gas	II 2G
ATEX category Dust	II 2D
Explosion ignition protection type Gas	Ex db IIC T4 Gb
Explosion ignition protection type Dust	Ex tb IIIC T135°C Db
Explosion-proof ambient temperature	-65°C ≤ Ta ≤ +40°C
Protection class	IP66
Manual override	Pushing
Flow direction	non reversible
Duty cycle	100 %
Insulation class	H
Characteristic coil data	110VDC:3
Permissible frequency fluctuation	+/- 10 %
Operating medium	Compressed air in accordance with ISO8573-1:2010 [7:4:4]
Note on operating and pilot medium	Lubricated operation possible (subsequently required for further operation)
Corrosion resistance classification CRC	2 - Moderate corrosion stress
PWIS conformity	VDMA24364 zone III
Ambient temperature	-65 ... 80 °C
Mounting type	CNOMO
Materials note	Conforms to RoHS