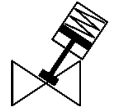


# Angle seat valve

## VZXA-A-TS6-50-M6-B1T-8-K-75-20-PR-PM

Part number: 8111588

FESTO



### Data sheet

| Feature                                      | Value   |
|--|---|
| Design structure                             | Poppet valve with piston actuator   |
| Type of actuation                            | pneumatic   |
| Assembly position                            | Any   |
| Mounting type                                | Line installation   |
| Line connection                              | G2 threaded collar to DIN ISO 228   |
| Valve function                               | 2/2   |
| Flow direction                               | non reversible  |
| Pressure of medium                           | 0 ... 0.8 MPa   |
| Medium pressure                              | 0 ... 8 bar   |
| Type of reset                                | mechanical spring   |
| Type of piloting                             | With external control   |
| Pneumatic connection                         | Female thread G1/8  |
| Operating pressure MPa                       | 0.5 ... 0.7 MPa   |
| Working pressure                             | 5 ... 7 bar   |
| Operating pressure                           | 72.5 ... 101.5 psi  |
| Medium                                       | Vapour<br>Inert gases<br>Filtered compressed air, degree of filtration 200 µm |
| Flow direction                               | Above valve seat, for gaseous media   |
| Control of the medium                        | On/off operation  |
| Operating medium                             | Compressed air in accordance with ISO8573-1:2010 [7:4:4]                      |
| Max. viscosity                               | 600 mm <sup>2</sup> /s  |
| Medium temperature                           | -10 ... 60 °C   |
| Ambient temperature                          | 0 ... 60 °C   |
| Flow rate Kv                                 | 40.1 m <sup>3</sup> /h  |
| Outdoor use                                  | C1 - weather protected locations of use                                       |
| Materials note                               | Conforms to RoHS  |
| PWIS conformity                              | VDMA24364 zone III  |
| Material process valve housing               | Brass   |
| Material number, process valve housing       | CW724R  |
| Material seals                               | FPM   |
| Material spindle seal                        | PTFE  |
| Material seat seal                           | PTFE  |
| Product weight                               | 4,627 g   |
| CE symbol (see declaration of conformity)    | according to EU printing device guideline                                     |
| UKCA marking (see declaration of conformity) | UK regulation for pressure equipment  |
| Actuator size                                | 75 mm   |
| Stroke                                       | 20 mm   |
| Control function                             | Closed via reduced spring force, NC   |
| Position detection                           | With mechanical indicator   |
| Material drive housing                       | PA-reinforced   |
| Storage temperature                          | -10 ... 60 °C   |
| Protection class                             | IP65<br>IP67  |
| Material piston rod                          | High alloy steel, non-corrosive   |
| Material cover                               | PA-reinforced   |