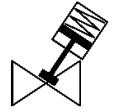


# Angle seat valve

## VZXA-A-TS6-25-M6-B1T-16-K-75-20-PR-PM

Part number: 8111585

FESTO



### Data sheet

| Feature                                | Value   |
|--|---|
| Design structure                       | Poppet valve with piston actuator   |
| Type of actuation                      | pneumatic   |
| Assembly position                      | Any   |
| Mounting type                          | Line installation   |
| Line connection                        | G1 threaded collar to DIN ISO 228   |
| Valve function                         | 2/2   |
| Flow direction                         | non reversible  |
| Pressure of medium                     | 0 ... 1.6 MPa   |
| Medium pressure                        | 0 ... 16 bar  |
| Type of reset                          | mechanical spring   |
| Type of piloting                       | With external control   |
| Pneumatic connection                   | Female thread G1/8  |
| Operating pressure MPa                 | 0.5 ... 0.7 MPa   |
| Working pressure                       | 5 ... 7 bar   |
| Operating pressure                     | 72.5 ... 101.5 psi  |
| Medium                                 | Vapour<br>Inert gases<br>Filtered compressed air, degree of filtration 200 µm |
| Flow direction                         | Above valve seat, for gaseous media   |
| Control of the medium                  | On/off operation  |
| Operating medium                       | Compressed air in accordance with ISO8573-1:2010 [7:4:4]                      |
| Max. viscosity                         | 600 mm <sup>2</sup> /s  |
| Medium temperature                     | -10 ... 60 °C   |
| Ambient temperature                    | 0 ... 60 °C   |
| Flow rate Kv                           | 19.2 m <sup>3</sup> /h  |
| Outdoor use                            | C1 - weather protected locations of use                                       |
| Materials note                         | Conforms to RoHS  |
| PWIS conformity                        | VDMA24364 zone III  |
| Material process valve housing         | Brass   |
| Material number, process valve housing | CW724R  |
| Material seals                         | FPM   |
| Material spindle seal                  | PTFE  |
| Material seat seal                     | PTFE  |
| Product weight                         | 2,550 g   |
| Actuator size                          | 75 mm   |
| Stroke                                 | 20 mm   |
| Control function                       | Closed via reduced spring force, NC   |
| Position detection                     | With mechanical indicator   |
| Material drive housing                 | PA-reinforced   |
| Storage temperature                    | -10 ... 60 °C   |
| Protection class                       | IP65<br>IP67  |
| Material piston rod                    | High alloy steel, non-corrosive   |
| Material cover                         | PA-reinforced   |