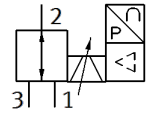
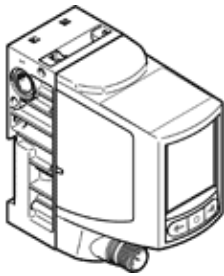


# Proportional pressure regulator VPPI-5L-3-G18-1V1H-V1-S1D

Part number: 8104673

FESTO



## Data sheet

Feature	Value
Nominal diameter, pressurization	5 mm
Nominal diameter, exhaust	5 mm
Type of actuation	electrical
Sealing principle	soft
Total leakage	5 l/h
Flow direction	non reversible
Assembly position	Any
Design structure	Poppet valve with spring return
Short circuit strength	for all electrical connections
Max. line length	30 m
Setpoint input	0 - 10 V PWM Digital
Input resistance	100 kOhm
Safety instructions	Safety position VPPI, normally closed
Polarity protected	for all electrical connections
Type of reset	mechanical spring
Dimensions W x L x H	42,2 mm x 95,3 mm x 94,3 mm
Type of piloting	direct
Valve function	3-way proportional-pressure regulator
Type of display	TFT color
Display size	1.77"
Display resolution	128x160 Pixel
Working pressure	1 ... 2 bar
Pressure regulation range MPa	-0.1 ... 0.1 MPa
Pressure regulation range	-1 ... 1 bar
Inlet pressure 1	0 ... 6 bar
Supply pressure 1 MPa	0 ... 0.6 MPa
Input pressure 3	-0.1 ... 0 MPa
Inlet pressure 3	-1 ... 0 bar
Bursting pressure	40 bar
Standard nominal flow rate	150 l/min
Standard nominal flow rate 2-3	20 l/min
Operating voltage range DC	21.6 ... 27.6 V
Nominal current	0.15 A
Max. current consumption	525 mA
Max. electrical power consumption	14.5 W
Nominal operating voltage DC	24 V
Switch output	Push-Pull
Max. output current	25 mA
Signal range, analog output	0 - 10 V
Min. load resistance, voltage output	2,000 Ohm
Accuracy, analog output FS	1 %FS
Operating medium	Compressed air in accordance with ISO8573-1:2010 [7:4:4] Inert gases
Note on operating and pilot medium	Lubricated operation not possible

<b>Feature</b>	<b>Value</b>
Authorization	RCM Mark
KC mark	KC-EMV
CE symbol (see declaration of conformity)	according to EU-EMV guideline in accordance with EU RoHS directive
UKCA marking (see declaration of conformity)	To UK instructions for EMC To UK RoHS instructions
Vibration resistance	Transport application test at severity level 2 in accordance with FN 942017-4 and EN 60068-2-6
Shock resistance	Shock test with severity level 2 in accordance with FN 942017-5 and EN 60068-2-27
Corrosion resistance classification CRC	2 - Moderate corrosion stress
PWIS conformity	VDMA24364-B1/B2-L
Food-safe	See Supplementary material information
Medium temperature	0 ... 50 °C
Protection class	IP65
Ambient temperature	0 ... 50 °C
Storage temperature	-20 ... 70 °C
Climatic category	3K3 to EN 60721
Nominal altitude of use	< 3000 m NHN
Instructions for use	The product is suitable for industrial purposes only. Measures for interference suppression may be required in residential areas.
Sound power level	62.5 dB(A)
Sound power level at a distance of 1 m	51.9 dB(A)
Product weight	370 g
Linearity	0.9 %FS
Hysteresis	0.4 %FS
Reproducibility	0.4 %FS
Overall accuracy	1,1 %FS
Temperature coefficient	0.02 %/K
Electrical connection 1, function	Actual value output Setpoint input Power supply
Electrical connection 1, connection type	Plug
Electrical connection 1, connection technology	M12x1, A-coded in accordance with EN 61076-2-101
Electrical connection 1, number of pins/wires	5
Electrical connection 1, tightening torque	1.5 Nm
Mounting type	with through-hole for M4 screw with top-hat rail
Pneumatic connection, port 1	G1/8
Pneumatic connection, port 2	G1/8
Pneumatic connection, port 3	G1/8
Max. tightening torque for fitting	8.5 Nm
Materials note	Conforms to RoHS
Material housing	PA-reinforced
Material seals	HNBR PTFE