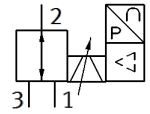
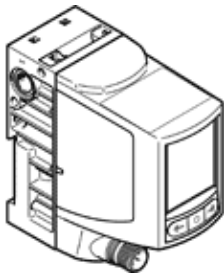


Proportional pressure regulator VPPI-5L-3-G18-0L10H-V1-S1D

Part number: 8104669

FESTO



Data sheet

| Feature | Value |
|--------------------------------------|---|
| Nominal diameter, pressurization | 5 mm |
| Nominal diameter, exhaust | 5 mm |
| Type of actuation | electrical |
| Sealing principle | soft |
| Total leakage | 5 l/h |
| Flow direction | non reversible |
| Assembly position | Any |
| Design structure | Poppet valve with spring return |
| Short circuit strength | for all electrical connections |
| Max. line length | 30 m |
| Setpoint input | 0 - 10 V PWM Digital |
| Input resistance | 100 kOhm |
| Safety instructions | Safety position VPPI, normally closed |
| Polarity protected | for all electrical connections |
| Type of reset | mechanical spring |
| Dimensions W x L x H | 42,2 mm x 95,3 mm x 94,3 mm |
| Type of piloting | direct |
| Valve function | 3-way proportional-pressure regulator |
| Type of display | TFT color |
| Display size | 1.77" |
| Display resolution | 128x160 Pixel |
| Working pressure | 10 ... 12 bar |
| Pressure regulation range MPa | 0 ... 1 MPa |
| Pressure regulation range | 0 ... 10 bar |
| Inlet pressure 1 | 0 ... 13 bar |
| Supply pressure 1 MPa | 0 ... 1.3 MPa |
| Bursting pressure | 40 bar |
| Standard nominal flow rate | 1,400 l/min |
| Standard nominal flow rate 2-3 | 750 l/min |
| Operating voltage range DC | 21.6 ... 27.6 V |
| Nominal current | 0.15 A |
| Max. current consumption | 525 mA |
| Max. electrical power consumption | 14.5 W |
| Nominal operating voltage DC | 24 V |
| Switch output | Push-Pull |
| Max. output current | 25 mA |
| Signal range, analog output | 0 - 10 V |
| Min. load resistance, voltage output | 2,000 Ohm |
| Accuracy, analog output FS | 1 %FS |
| Operating medium | Compressed air in accordance with ISO8573-1:2010 [7:4:4] Inert gases |
| Note on operating and pilot medium | Lubricated operation not possible |
| Authorization | RCM Mark |
| KC mark | KC-EMV |

| Feature | Value |
|--|---|
| CE symbol (see declaration of conformity) | according to EU-EMV guideline in accordance with EU RoHS directive |
| UKCA marking (see declaration of conformity) | To UK instructions for EMC To UK RoHS instructions |
| Vibration resistance | Transport application test at severity level 2 in accordance with FN 942017-4 and EN 60068-2-6 |
| Shock resistance | Shock test with severity level 2 in accordance with FN 942017-5 and EN 60068-2-27 |
| Corrosion resistance classification CRC | 2 - Moderate corrosion stress |
| PWIS conformity | VDMA24364-B1/B2-L |
| Food-safe | See Supplementary material information |
| Medium temperature | 0 ... 50 °C |
| Protection class | IP65 |
| Ambient temperature | 0 ... 50 °C |
| Storage temperature | -20 ... 70 °C |
| Climatic category | 3K3 to EN 60721 |
| Nominal altitude of use | < 3000 m NHN |
| Instructions for use | The product is suitable for industrial purposes only. Measures for interference suppression may be required in residential areas. |
| Sound power level | 62.5 dB(A) |
| Sound power level at a distance of 1 m | 51.9 dB(A) |
| Product weight | 370 g |
| Linearity | 0.9 %FS |
| Hysteresis | 0.4 %FS |
| Reproducibility | 0.4 %FS |
| Overall accuracy | 1,1 %FS |
| Temperature coefficient | 0.02 %/K |
| Electrical connection 1, function | Actual value output Setpoint input Power supply |
| Electrical connection 1, connection type | Plug |
| Electrical connection 1, connection technology | M12x1, A-coded in accordance with EN 61076-2-101 |
| Electrical connection 1, number of pins/wires | 5 |
| Electrical connection 1, tightening torque | 1.5 Nm |
| Mounting type | with through-hole for M4 screw with top-hat rail |
| Pneumatic connection, port 1 | G1/8 |
| Pneumatic connection, port 2 | G1/8 |
| Pneumatic connection, port 3 | G1/8 |
| Max. tightening torque for fitting | 8.5 Nm |
| Materials note | Conforms to RoHS |
| Material housing | PA-reinforced |
| Material seals | HNBR PTFE |