

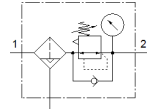
# Filter regulator

## MS6-LFR-1/2-D6-E-P-VC-AG-BAR-B

Part number: 8098312

★ Core product range

FESTO



## Data sheet

Feature	Value
Size	6
Series	MS
Actuator lock	Rotary knob with lock
Assembly position	Vertical +/- 5°
Grade of filtration	40 µm
Condensate drain	fully automatic manual momentary-contact
Design structure	Filter regulator with pressure gauge directly-controlled piston regulator
Max. condensate volume	27.3 ml
Controller function	Output pressure constant with secondary exhaust with return flow
Unit(s) that can be displayed	bar psi
Pressure gauge	with pressure gauge
Operating pressure MPa	0.2 ... 1 MPa
Working pressure	2 ... 10 bar
Pressure regulation range	0.3 ... 7 bar
Max. pressure hysteresis (MPa)	0.035 MPa
Max. pressure hysteresis	0.35 bar 5.075 psi
Standard nominal flow rate	5,300 l/min
Operating medium	Compressed air in accordance with ISO8573-1:2010 [7:4:4] Inert gases
Note on operating and pilot medium	Compatibility with ester oil not guaranteed
Corrosion resistance classification CRC	1 - Low corrosion stress
PWIS conformity	VDMA24364-B1/B2-L
Cleanroom class	ISO class 7
Storage temperature	-5 ... 50 °C
Air purity class at output	Compressed air in accordance with ISO8573-1:2010 [7:4:4]
Medium temperature	5 ... 50 °C
Ambient temperature	5 ... 50 °C
Product weight	589 g
Mounting type	Front panel installation Line installation with accessories Optional
Pneumatic connection, port 1	G1/2
Pneumatic connection, port 2	G1/2
Materials note	Conforms to RoHS
Material seals	NBR
Material rotary knob	POM
Material spring	High alloy steel Galvanized steel
Material filter	PE
Material housing	PA-reinforced
Material bowl	PC
Material valve stem	POM