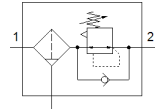


Filter regulator

MS2-LFR-QS6-D6-C-P-M-A8-B

Part number: 8086646

FESTO



Data sheet

Feature	Value
Size	2
Series	MS
Actuator lock	Rotary knob with lock
Assembly position	Vertical +/- 5°
Grade of filtration	5 µm
Condensate drain	manual rotary
Design structure	Filter regulator without pressure gauge
Max. condensate volume	3 ml
Controller function	Output pressure constant with secondary exhaust with return flow
Pressure gauge	Prepared for G1/8
Operating pressure MPa	0.1 ... 0.8 MPa
Working pressure	1 ... 8 bar
Pressure regulation range	0.5 ... 7 bar
Max. pressure hysteresis (MPa)	0.025 MPa
Max. pressure hysteresis	0.25 bar 3.625 psi
Standard nominal flow rate	310 l/min
Operating medium	Compressed air in accordance with ISO8573-1:2010 [7:4:4] Inert gases
Corrosion resistance classification CRC	1 - Low corrosion stress
PWIS conformity	VDMA24364-B1/B2-L
Cleanroom class	ISO class 7
Storage temperature	-5 ... 50 °C
Air purity class at output	Compressed air in accordance with ISO8573-1:2010 [6:4:4]
Medium temperature	-5 ... 50 °C
Ambient temperature	-5 ... 50 °C
Product weight	35.7 g
Mounting type	Front panel installation Line installation with accessories Optional
Pneumatic connection, port 1	QS-6
Pneumatic connection, port 2	QS-6
Materials note	Conforms to RoHS
Material seals	NBR
Material rotary knob	POM
Material spring	High alloy steel
Material filter	PE
Material housing	PA-reinforced
Material membrane	NBR
Material bowl	PC
Material separating plate	POM
Material valve stem	Wrought Aluminum alloy NBR