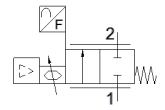
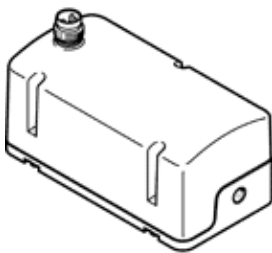


Proportional flow control valve

VEMD-L-6-14-20-D21-M5-5-R1-V4

Part number: 8086473

FESTO



Data sheet

| Feature | Value |
|-------------------------------------|--|
| Protection class | IP40 |
| Note on degree of protection | IP51 with horizontal installation |
| Flow rate control range | 0 ... 20 l/min |
| Note on the flow rate control range | The specified flow control range only applies at room temperature. Above room temperature, a reduction in the max. adjustable flow rate may occur. |
| Flow direction | non reversible |
| Operating pressure MPa | 0 ... 0.25 MPa |
| Working pressure | 0 ... 2.5 bar |
| Overload pressure | 0.6 MPa 6 bar |
| Overload pressure (psi) | 87 psi |
| Burst pressure | 1 MPa |
| Bursting pressure | 10 bar |
| Burst pressure | 145 psi |
| Accuracy of flow rate | ± (4% o.m.v. + 1,25% FS) |
| Repetition accuracy in ± %FS | 1 %FS |
| Hysteresis FS | 2.5 %FS |
| Linearity error, FS | 2 % |
| Temperature coefficient | 0.1 %/K |
| Valve function | 2-way proportional flow control valve |
| Nominal size | 1.4 mm |
| Pneumatic connection, port 1 | Female thread M5 |
| Pneumatic connection, port 2 | Female thread M5 |
| Medium | Compressed air to ISO 8573-1:2010 [5:4:1] Inert gases Oxygen (oxygen applications according to IEC 60601-1 only on request) Nitrogen |
| Information on the medium | Lubricated operation not possible |
| Special characteristics | Oxygen-compatible to DIN EN 1797 |
| Ambient Conditions | Not suitable for use in an environment enriched with oxygen according to IEC 60601-1 |
| Duty cycle | 100 % |
| Medium temperature | 5 ... 40 °C |
| Ambient temperature | 0 ... 50 °C |
| Storage temperature | -20 ... 70 °C |
| Nominal operating voltage DC | 12 V |
| Operating voltage range DC | 11.1 ... 13.2 V |
| Max. current consumption | 65 mA |
| Max. electrical power consumption | 1 W |
| Electrical connection | 4-pin M8x1, A-coded to EN 61076-2-104 Plug |
| Setpoint value | 0,2 - 10 V |
| Signal range, analog input | 0,2 - 10 V |
| Signal range, analog output | 0,2 - 10 V |
| Polarity protected | For operating voltage connections |

| Feature | Value |
|--|---|
| Product weight | 92 g |
| Material seals | EPDM NBR |
| Material cover | PA-reinforced |
| Materials note | Conforms to RoHS |
| Dimensions W x L x H | 37 mm x 70 mm x 31 mm |
| Mounting type | Direct mounting via threads |
| Assembly position | Any |
| Authorization | RCM Mark |
| Conforms to standard | EN 61000-6-2 (EMC) EN 61000-6-3 (EMC) |
| KC mark | KC-EMV |
| CE symbol (see declaration of conformity) | according to EU-EMV guideline in accordance with EU RoHS directive |
| UKCA marking (see declaration of conformity) | To UK instructions for EMC To UK RoHS instructions |
| PWIS conformity | VDMA24364 zone III |