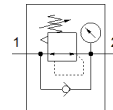
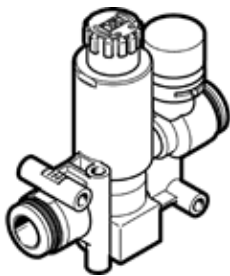


# Pressure regulator VRPA-CM-T14-E

Part number: 8086006

FESTO



## Data sheet

Feature	Value
Controller function	Output pressure constant with secondary exhaust with return flow
Pneumatic connection, port 1	QS-1/4
Pneumatic connection, port 2	QS-1/4
Mounting type	with through hole
Standard nominal flow rate	95 l/min
Ambient temperature	0 ... 60 °C
Material housing	PBT
Operating medium	Compressed air in accordance with ISO8573-1:2010 [7:4:4]
Assembly position	Any
Type of actuation	manual
Adjusting element	Rotary knob with lock
Pressure gauge	with pressure gauge
Pressure regulation range MPa	0.1 ... 0.8 MPa
Pressure regulation range	1 ... 8 bar
Pressure regulation range psi	14.5 ... 116 psi
Note on operating and pilot medium	Lubricated operation possible (subsequently required for further operation)
PWIS conformity	VDMA24364-B2-L
Cleanroom class	ISO class 4
Product weight	23 g
Materials note	Conforms to RoHS
Material static seals	NBR