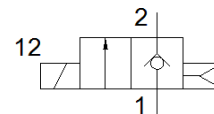
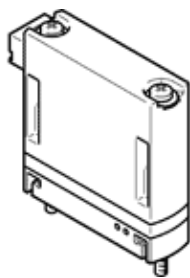


Solenoid valve

MHJ9-MF/LP

Part number: 8084233

FESTO



Data sheet

| Feature | Value |
|--|---|
| Valve function | 2/2 closed, monostable |
| Type of actuation | electrical |
| Width | 9 mm |
| Standard nominal flow rate | 100 l/min |
| Operating pressure MPa | 0.05 ... 0.4 MPa |
| Working pressure | 0.5 ... 4 bar |
| Design structure | Poppet valve without spring return |
| Type of reset | Air spring |
| Protection class | IP40 |
| Grid dimension | 9.5 mm |
| Note on operation | Do not operate without flow For block mounting with flow, max. ambient temperature 45°C. |
| Sealing principle | Hard |
| Assembly position | Any |
| Manual override | None |
| Type of piloting | direct |
| Flow direction | non reversible |
| b value | 0.38 |
| C value | 0.4 l/sbar |
| Maximum switching frequency | 1,000 Hz |
| Switching time on at 0.4 MPa (4 bar, 58 psi) and 24 V in new condition | 0.8 ms |
| Switching time off at 0.4 MPa (4 bar, 58 psi) and 24 V in new condition | 0.5 ms |
| Switching time on at 0.4 MPa (4 bar, 58 psi) and 48 V in new condition | 0.6 ms |
| Switching time off at 0.4 MPa (4 bar, 58 psi) and 48 V in new condition | 0.4 ms |
| Switching time on at 0.4 MPa (4 bar, 58 psi) and 12 V in new condition | 1.1 ms |
| Switching time off at 0.4 MPa (4 bar, 58 psi) and 12 V in new condition | 0.4 ms |
| Switching time on at 0.05 MPa (0.5 bar, 7.25 psi) and 24 V in new condition | 0.7 ms |
| Switching time off at 0.05 MPa (0.5 bar, 7.25 psi) and 24 V in new condition | 0.5 ms |
| Tolerance for Switching time OFF | +15 %/-25 % |
| Tolerance for Switching time ON | +/-15 % |
| Operating voltage range DC | 12 ... 53 V |
| Duty cycle | 100 % |
| Note regarding operating voltage | Only with cable MHJ9-KMH-... |
| Coil resistance | 2.5 Ohm |
| Operating medium | Compressed air in accordance with ISO8573-1:2010 [7:4:4] |
| Note on operating and pilot medium | Lubricated operation possible |
| Restriction ambient and medium temperature | related to switching frequency |
| Corrosion resistance classification CRC | 2 - Moderate corrosion stress |
| PWIS conformity | VDMA24364-B2-L |
| Storage temperature | -20 ... 50 °C |
| Max. permissible solenoid surface temperature | 120 °C |
| Medium temperature | -5 ... 60 °C |
| Ambient temperature | -5 ... 60 °C |
| Max. tightening torque, valve mounting | 0.28 Nm |
| Product weight | 25 g |
| Electrical connection | 2-pin |

| Feature | Value |
|------------------------------|------------------|
| | Plug KMH |
| Mounting type | On subbase |
| Pneumatic connection, port 1 | Subbase |
| Pneumatic connection, port 2 | Subbase |
| Materials note | Conforms to RoHS |
| Material seals | HNBR |
| Material housing | PA-reinforced |
| Material screws | Steel |