

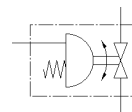
Ball valve actuator unit

VZBM-A-1"-RP-25-F-3T-B2-PB40

Part number: 8070278

FESTO

Brass, with single-acting drive DFPD 3/2-way, nominal width 1", PN25, thread EN 10226-1.



Data sheet

Feature	Value
Design structure	3-way ball valve Swivel actuator
Type of actuation	pneumatic
Assembly position	Any
Mounting type	Line installation
Process valve connection	Rp1
Switching position indicator	Slot direction = flow direction
Nominal diameter DN	25
Working pressure	5.5 ... 8 bar
Nominal pressure of process valve	25
Medium	Compressed air in accordance with ISO8573-1:2010 [-::-] Inert gases Water (no water vapour) Neutral fluids
Operating medium	Compressed air in accordance with ISO8573-1:2010 [7:4:4]
Note on operating and pilot medium	Pressure dew point 10°C below ambient temperature/temperature of medium Lubricated operation possible (subsequently required for further operation)
Medium temperature	-20 ... 130 °C
Ambient temperature	-20 ... 80 °C
Flow rate Kv, T holes, angular	70 m ³ /h
Materials note	Conforms to RoHS
PWIS conformity	VDMA24364 zone III
Material housing	Nickel-plated brass
Material number for housing	CW617N
Material seals	HNBR PTFE
Material ball	Brass, chrome-plated
Material number for ball	CW614N
Material shaft	Brass
Material number for shaft	CW614N
Product weight	3,431 g
Corrosion resistance classification CRC	1 - Low corrosion stress