

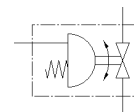
Ball valve actuator unit

VZBM-A-1/2"-RP-25-F-3T-B2-PB20

Part number: 8070276

FESTO

Brass, with single-acting drive DFPD 3/2-way, nominal width 1/2", PN25, thread EN 10226-1.



Data sheet

| Feature | Value |
|---|--|
| Design structure | 3-way ball valve Swivel actuator |
| Type of actuation | pneumatic |
| Assembly position | Any |
| Mounting type | Line installation |
| Process valve connection | Rp1/2 |
| Switching position indicator | Slot direction = flow direction |
| Nominal diameter DN | 15 |
| Working pressure | 5.5 ... 8 bar |
| Nominal pressure of process valve | 25 |
| Medium | Compressed air in accordance with ISO8573-1:2010 [-:~:] Inert gases Water (no water vapour) Neutral fluids |
| Operating medium | Compressed air in accordance with ISO8573-1:2010 [7:4:4] |
| Note on operating and pilot medium | Pressure dew point 10°C below ambient temperature/temperature of medium Lubricated operation possible (subsequently required for further operation) |
| Medium temperature | -20 ... 130 °C |
| Ambient temperature | -20 ... 80 °C |
| Flow rate Kv, T holes, angular | 17 m ³ /h |
| Materials note | Conforms to RoHS |
| PWIS conformity | VDMA24364 zone III |
| Material housing | Nickel-plated brass |
| Material number for housing | CW617N |
| Material seals | HNBR PTFE |
| Material ball | Brass, chrome-plated |
| Material number for ball | CW614N |
| Material shaft | Brass |
| Material number for shaft | CW614N |
| Product weight | 1,887 g |
| Corrosion resistance classification CRC | 1 - Low corrosion stress |