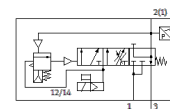


Pressure build-up valve

VABF-S6-1-P5A4S2YE-G12-1T5-PA

Part number: 8067405

FESTO



Data sheet

Feature	Value
Max. positive test pulse with logic 0	2,000 µs
Max. negative test pulse with logic 1	1,200 µs
Grid dimension	41 mm
Valve size	40 mm
Vibration resistance	Transport application test at severity level 2 in accordance with FN 942017-4 and EN 60068-2-6
Shock resistance	Shock test with severity level 2 in accordance with FN 942017-5 and EN 60068-2-27
Type of actuation	electrical
Sealing principle	soft
Assembly position	Any
Manual override	detenting self-resetting via electrical control signal
Design structure	Piston slide
Type of reset	mechanical spring
Type of piloting	Piloted
Pilot air supply	Internal
Flow direction	non reversible
Valve function	Pressure build-up Exhaust
Switching element function	Normally closed contact
Lap	Underlap
Note on forced dynamisation	Switching frequency min. 1/month
Signal status display	Yellow LED, valve control Green LED, pressure switch, exhausted status
Switching position sensing	Via pressure switch, exhausted status
Operating pressure MPa	0.2 ... 1 MPa
Working pressure	2 ... 10 bar
Changeover pressure	Not adjustable Switching point between 50 and 75% of the operating pressure
Standard nominal flow rate ventilation	3,000 l/min
Standard nominal flow rate venting	3,300 l/min
Duty cycle	100 %
Nominal operating voltage DC	24 V
Characteristic coil data	24 V DC: 1.6 W
Permissible voltage fluctuation	+/- 10 %
Operating medium	Compressed air in accordance with ISO8573-1:2010 [7:4:4]
Note on operating and pilot medium	Lubricated operation not possible
Corrosion resistance classification CRC	0 - No corrosion stress
PWIS conformity	VDMA24364-B1/B2-L
Medium temperature	-5 ... 50 °C
Protection class	IP65
Pilot medium	Compressed air in accordance with ISO8573-1:2010 [7:4:4]
Ambient temperature	-5 ... 50 °C
MTTF, subcomponent	452 years, pressure switch
Product weight	466 g

Feature	Value
Electrical connection	Fieldbus Plug-in
Mounting type	On subbase
Pneumatic connection, port 3	G1/2
Materials note	Conforms to RoHS
Material seals	HNBR NBR
Material housing	Wrought Aluminum alloy
Material screws	Galvanized steel