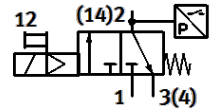
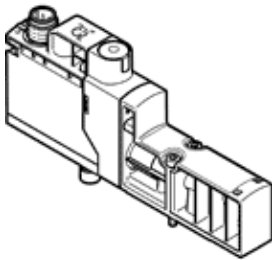


Solenoid valve

VSVA-BT-M32CS1-MYE-A2-1T1L-PZ

Part number: 8066568

FESTO



Data sheet

Feature	Value
Valve function	3/2 closed, monostable
Type of actuation	electrical
Width	18 mm
Standard nominal flow rate	125 l/min
Standard nominal flow rate venting	125 l/min
Operating pressure MPa	0.3 ... 1 MPa
Working pressure	3 ... 10 bar
Design structure	Poppet seat
Type of reset	mechanical spring Air spring
Protection class	IP65
Sealing principle	soft
Assembly position	Any
Manual override	detenting self-resetting via electrical control signal
Type of piloting	Piloted
Pilot air supply	Internal
Flow direction	non reversible
Lap	Underlap
Signal status display	Yellow LED, valve control Green LED, pressure switch, exhausted status
Switching position sensing	Via pressure switch, exhausted status
Duty cycle	100 %
Max. positive test pulse with logic 0	2,000 µs
Max. negative test pulse with logic 1	1,200 µs
Nominal operating voltage DC	24 V
Characteristic coil data	24 V DC: 1.6 W
Permissible voltage fluctuation	+/- 10 %
Operating medium	Compressed air in accordance with ISO8573-1:2010 [7:4:4]
Note on operating and pilot medium	Lubricated operation not possible
Vibration resistance	Transport application test at severity level 2 in accordance with FN 942017-4 and EN 60068-2-6
Shock resistance	Shock test with severity level 2 in accordance with FN 942017-5 and EN 60068-2-27
Corrosion resistance classification CRC	0 - No corrosion stress
PWIS conformity	VDMA24364-B1/B2-L
Medium temperature	-5 ... 50 °C
Pilot medium	Compressed air in accordance with ISO8573-1:2010 [7:4:4]
Ambient temperature	-5 ... 50 °C
MTTF, subcomponent	443 years, pressure switch
Product weight	110 g
Electrical connection	Plug-in
Mounting type	On subbase
Pneumatic connection, port 2	G1/8
Pneumatic connection, port 4	G1/8
Materials note	Conforms to RoHS

Feature	Value
Material seals	HNBR NBR
Material housing	PA-reinforced
Material screws	Galvanized steel
Switching element function	Normally closed contact