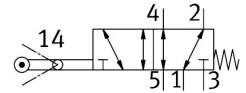


# Swivel lever valve VMEF-VR-M52-M-N18

Part number: 8048985

**FESTO**



## Data sheet

Feature	Value
Valve function	5/2, monostable
Actuation type	Mechanical
Width	20 mm
Standard nominal flow rate	750 l/min
Pneumatic working port	1/8 NPT
Operating pressure	-0.095 MPa...1 MPa -0.95 bar...10 bar
Structural design	Piston gate valve Quarter turn actuator
Reset method	Mechanical spring
Nominal width	5.2 mm
Sealing principle	Soft
Mounting position	Any
Type of control	Direct
Flow direction	Reversible
Lap	Overlap
Max. actuating speed with lateral actuation	1 m/s
Max. switching frequency	2.5 Hz
Cam angle	45 deg
Operating medium	Compressed air as per ISO 8573-1:2010 [7:-:-]
Information on operating and pilot media	Operation with oil lubrication possible (required for further use)
Corrosion resistance class (CRC)	1 - Low corrosion stress
LABS (PWIS) conformity	VDMA24364-B1/B2-L
Temperature of medium	-10 °C...60 °C
Ambient temperature	-10 °C...60 °C
Note on ambient temperature	Influence of heat on wear
Actuating torque	1.2 Nm
Product weight	207 g
Type of mounting	With through-hole
Pneumatic connection 1	1/8 NPT
Pneumatic connection 2	1/8 NPT
Pneumatic connection 3	1/8 NPT

Feature	Value
Pneumatic connection 4	1/8 NPT
Pneumatic connection 5	1/8 NPT
Note on materials	RoHS-compliant
Cover material	PA-reinforced
Seals material	NBR
Housing material	Wrought aluminum alloy, anodized