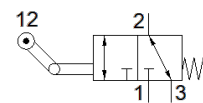


Roller lever valve

VMEF-KT-M32-M-N14

Part number: 8047107

FESTO



Data sheet

Feature	Value
Valve function	3/2-way, monostable
Type of actuation	mechanical
Width	20 mm
Standard nominal flow rate	870 l/min
Operating pressure MPa	-0.095 ... 1 MPa
Working pressure	-0.95 ... 10 bar
Design structure	Toggle lever Poppet seat
Type of reset	mechanical spring
Max. stroke limit (hard)	11 mm
Nominal size	6 mm
Instructions for use	Risk of pinching
Sealing principle	soft
Assembly position	Any
Type of piloting	direct
Flow direction	reversible
Lap	Zero overlap
Max. actuating speed for side actuation	0.7 m/s
Max. switching frequency	3 Hz
Cam angle	30 deg
Operating medium	Compressed air in accordance with ISO8573-1:2010 [7:-:]
Note on operating and pilot medium	Lubricated operation possible (subsequently required for further operation)
Corrosion resistance classification CRC	1 - Low corrosion stress
PWIS conformity	VDMA24364-B1/B2-L
Medium temperature	-10 ... 60 °C
Ambient temperature	-10 ... 60 °C
Note on ambient temperature	Influence of heat on wear
Actuating force	32.7 N
Product weight	218 g
Mounting type	with through hole
Pneumatic connection, port 1	1/4 NPT
Pneumatic connection, port 2	1/4 NPT
Pneumatic connection, port 3	1/4 NPT
Materials note	Conforms to RoHS
Material mounting adaptor	steel, galvanized
Material seals	NBR
Material housing	Anodised wrought aluminium alloy