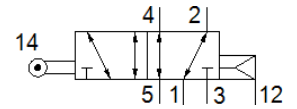
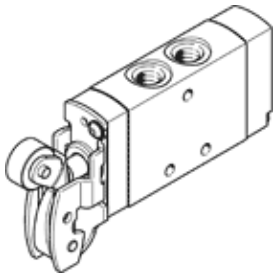


Roller lever valve VMEF-R-M52-E-G18

Part number: 8047092

FESTO



Data sheet

| Feature | Value |
|---|---|
| Valve function | 5/2 monostable |
| Type of actuation | mechanical |
| Width | 20 mm |
| Standard nominal flow rate | 750 l/min |
| Operating pressure MPa | -0.095 ... 1 MPa |
| Working pressure | -0.95 ... 10 bar |
| Design structure | Piston slide Roller lever |
| Type of reset | Air spring |
| Max. stroke limit (hard) | 11.6 mm |
| Nominal size | 5.2 mm |
| Instructions for use | Risk of pinching |
| Sealing principle | soft |
| Assembly position | Any |
| Type of piloting | direct |
| Flow direction | reversible |
| Lap | Positive overlap |
| Max. actuating speed for side actuation | 1.4 m/s |
| Max. switching frequency | 3 Hz |
| Cam angle | 30 deg |
| Operating medium | Compressed air in accordance with ISO8573-1:2010 [7:-:-] |
| Note on operating and pilot medium | Lubricated operation possible (subsequently required for further operation) |
| Corrosion resistance classification CRC | 1 - Low corrosion stress |
| PWIS conformity | VDMA24364-B1/B2-L |
| Medium temperature | -10 ... 60 °C |
| Ambient temperature | -10 ... 60 °C |
| Note on ambient temperature | Influence of heat on wear |
| Actuating force | 38 N |
| Product weight | 240 g |
| Mounting type | with through hole |
| Pneumatic connection, port 1 | G1/8 |
| Pneumatic connection, port 2 | G1/8 |
| Pneumatic connection, port 3 | G1/8 |
| Pneumatic connection, port 4 | G1/8 |
| Pneumatic connection, port 5 | G1/8 |
| Materials note | Conforms to RoHS |
| Material mounting adaptor | steel, galvanized |
| Material cover | PA-reinforced |
| Material seals | NBR |
| Material housing | Anodised wrought aluminium alloy |