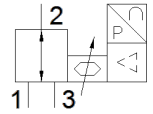


Proportional pressure regulator

VEAB-B-26-D14-F-A4-1R1

Part number: 8046272

FESTO



Data sheet

| Feature | Value |
|--|---|
| Valve function | 3-way proportional-pressure regulator |
| Type of piloting | direct |
| Type of reset | mechanical spring |
| Type of actuation | electrical |
| Assembly position | Any |
| Sealing principle | soft |
| Ambient temperature | 0 ... 50 °C |
| Medium temperature | 5 ... 50 °C |
| Storage temperature | -20 ... 70 °C |
| Dimensions W x L x H | 18 mm x 67 mm x 66 mm |
| Pneumatic connection, port 1 | Flange |
| Pneumatic connection, port 2 | Flange |
| Pneumatic connection, port 3 | Flange |
| Material seals | NBR |
| Mounting type | with through hole with accessories Optional |
| Supply pressure 1 MPa | 0.1 MPa |
| Inlet pressure 1 | 1 bar |
| Supply pressure 1 psi | 14.5 psi |
| Output pressure 2 | -0.1 ... -0.0005 MPa -1 ... -0.005 bar -14.5 ... -0.0725 psi |
| Input pressure 3 | -0.1 MPa |
| Inlet pressure 3 | -1 bar |
| Input pressure 3 | -14.5 psi |
| Standard nominal flow rate | ≥ 4.5 l/min |
| Standard nominal flow rate 2-3 | ≥ 3 l/min |
| Linearity error, FS | 0.5 % |
| Repetition accuracy in ± %FS | 0.4 %FS |
| Hysteresis FS | 0.25 %FS |
| Temperature coefficient | 0.05 %/K |
| Absolute accuracy in ± %FS at room temperature | 0.75 %FS |
| Product weight | 70 g |
| Operating medium | Compressed air in accordance with ISO8573-1:2010 [7:4:4] Inert gases |
| Note on operating and pilot medium | Lubricated operation not possible |
| Protection class | IP65 |
| Authorization | RCM Mark |
| KC mark | KC-EMV |
| CE symbol (see declaration of conformity) | according to EU-EMV guideline in accordance with EU RoHS directive |
| UKCA marking (see declaration of conformity) | To UK instructions for EMC To UK RoHS instructions |
| Materials note | Conforms to RoHS |
| PWIS conformity | VDMA24364 zone III |

| Feature | Value |
|---|--|
| Corrosion resistance classification CRC | 2 - Moderate corrosion stress |
| Operating voltage range DC | 19 ... 29 V |
| Nominal operating voltage DC | 24 V |
| Residual ripple | 10 % |
| Setpoint value | 4 - 20 mA |
| Signal range, analog output | 4 - 20 mA |
| Accuracy, analog output FS | 2 %FS |
| Max. electrical power consumption | 1 W |
| Polarity protected | for all electrical connections |
| Short circuit strength | for all electrical connections |
| Safety instructions | Safety position VEAA/VEAB |
| Type of display | LED |
| Electrical connection | 4-pin M8x1 Plug to EN 60947-5-2 |
| Material housing | PA-reinforced |