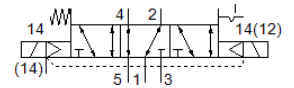


Solenoid valve

VSVA-B-P53AD-Z-A2-1T1L

Part number: 8039186

FESTO



Data sheet

Feature	Value
Valve function	5/3, port 2 pressurized, 4 exhausted
Type of actuation	electrical
Width	18 mm
Standard nominal flow rate	380 l/min
Operating pressure MPa	-0.09 ... 1 MPa
Working pressure	-0.9 ... 10 bar
Design structure	Piston slide
Type of reset	mechanical spring Electrical activation
Protection class	IP65 NEMA 4
Nominal size	5 mm
Exhaust-air function	throttleable Via throttle plate Via individual sub-base
Sealing principle	soft
Assembly position	Any
Manual override	Covered
Type of piloting	Piloted
Pilot air supply	external
Flow direction	Any
Lap	Underlap
Signal status display	LED
Pilot pressure MPa	0.3 ... 1 MPa
Pilot pressure	3 ... 10 bar
Flow rate of valve on individual subbase	380 l/min
Optimized flow rate of valve pneumatically concatenated flow	440 l/min
Flow rate of pneumatically linked valve	380 l/min
Asymmetrical switching time off	28 ms for control side 12
Asymmetrical switching time on	12 ms for control side 12 9 ms for control side 14
Duty cycle	100 %
Max. positive test pulse with logic 0	1,500 µs
Max. negative test pulse with logic 1	800 µs
Nominal operating voltage DC	24 V
Characteristic coil data	24 V DC: 1.6 W
Surge strength	2.5 kV
Degree of contamination	3
Permissible voltage fluctuation	+/- 10 %
Operating medium	Compressed air in accordance with ISO8573-1:2010 [7:4:4]
Note on operating and pilot medium	Lubricated operation possible (subsequently required for further operation)
Vibration resistance	Transport application test at severity level 2 in accordance with FN 942017-4 and EN 60068-2-6
Shock resistance	Shock test with severity level 2 in accordance with FN 942017-5 and EN 60068-2-27

Feature	Value
Corrosion resistance classification CRC	0 - No corrosion stress
PWIS conformity	VDMA24364-B1/B2-L
Medium temperature	-5 ... 50 °C
Relative air humidity	0 - 90 %
Sound pressure level	85 dB(A)
Ambient temperature	-5 ... 50 °C
Max. tightening torque, valve mounting	0.8 ... 1.2 Nm
Product weight	172 g
Electrical connection	4-pin Plug according to ISO 15407-2
Mounting type	On subbase
Auxiliary pilot air port 12/14	Manifold block, size 18 mm acc. to ISO 15407-2
Pilot exhaust port 82/84	Optional Ducted Non-ducted
Pneumatic connection, port 1	Manifold block, size 18 mm acc. to ISO 15407-2
Pneumatic connection, port 2	Manifold block, size 18 mm acc. to ISO 15407-2
Pneumatic connection, port 3	Manifold block, size 18 mm acc. to ISO 15407-2
Pneumatic connection, port 4	Manifold block, size 18 mm acc. to ISO 15407-2
Pneumatic connection, port 5	Manifold block, size 18 mm acc. to ISO 15407-2
Materials note	Conforms to RoHS
Material seals	FPM NBR
Material housing	Aluminum die cast PA
Material screws	Galvanized steel