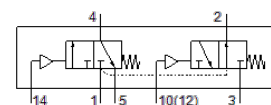


Pneumatic valve

VUWS-LT25-T32H-M-G14

Part number: 8035215

FESTO



Data sheet

Feature	Value
Valve function	2x3/2 open/closed, monostable
Type of actuation	pneumatic
Valve size	26.5 mm
Standard nominal flow rate	1,000 l/min
Operating pressure MPa	-0.09 ... 1 MPa
Working pressure	-0.9 ... 10 bar
Design structure	Poppet seat
Type of reset	mechanical spring
Authorization	c UL us - Recognized (OL)
Nominal size	6.9 mm
Exhaust-air function	throttleable
Sealing principle	soft
Assembly position	Any
Manual override	None
Type of piloting	direct
Pilot air supply	Internal
Flow direction	non reversible
Lap	Underlap
Pilot pressure MPa	0.25 ... 1 MPa
Pilot pressure	2.5 ... 10 bar
Switching time off	30 ms
Switching time on	7 ms
Operating medium	Compressed air in accordance with ISO8573-1:2010 [7:4:4]
Note on operating and pilot medium	Lubricated operation possible (subsequently required for further operation)
Vibration resistance	Transport application test at severity level 2 in accordance with FN 942017-4 and EN 60068-2-6
Shock resistance	Shock test with severity level 2 in accordance with FN 942017-5 and EN 60068-2-27
Corrosion resistance classification CRC	2 - Moderate corrosion stress
PWIS conformity	VDMA24364-B1/B2-L
Medium temperature	-5 ... 60 °C
Pilot medium	Compressed air in accordance with ISO8573-1:2010 [7:4:4]
Ambient temperature	-5 ... 60 °C
Product weight	377 g
Mounting type	on manifold rail with through hole Optional
Scavenging orifice connection	Non-ducted
Pilot air port 10	M5
Pilot air port 14	M5
Pneumatic connection, port 1	G1/4
Pneumatic connection, port 2	G1/4
Pneumatic connection, port 3	G1/4
Pneumatic connection, port 4	G1/4
Pneumatic connection, port 5	G1/4

Feature	Value
Materials note	Conforms to RoHS
Material seals	HNBR NBR TPE-U(PU)
Material housing	Aluminum die cast Painted
Material screws	Galvanized steel