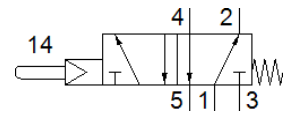
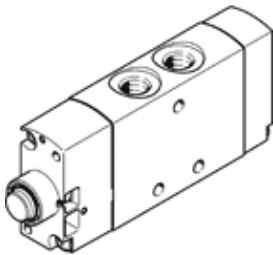


# Stem actuated valve VMEF-SC-M52-M-N18

Part number: 8031322

FESTO

This type is suitable for vacuum.



## Data sheet

Feature	Value
Valve function	5/2 monostable
Type of actuation	mechanical
Width	20 mm
Standard nominal flow rate	750 l/min
Operating pressure MPa	0.25 ... 1 MPa
Working pressure	2.5 ... 10 bar
Design structure	Piston slide
Type of reset	mechanical spring
Nominal size	5.2 mm
Instructions for use	Do not use as mechanical stop
Sealing principle	soft
Assembly position	Any
Type of piloting	Piloted
Pilot air supply	Internal
Flow direction	non reversible
Lap	Positive overlap
Pilot pressure MPa	0.25 ... 1 MPa
Pilot pressure	2.5 ... 10 bar 36.25 ... 145 psi
Max. switching frequency	3 Hz
Operating medium	Compressed air in accordance with ISO8573-1:2010 [7:-:-]
Note on operating and pilot medium	Lubricated operation possible (subsequently required for further operation)
Corrosion resistance classification CRC	2 - Moderate corrosion stress
PWIS conformity	VDMA24364-B1/B2-L
Medium temperature	-10 ... 60 °C
Ambient temperature	-10 ... 60 °C
Actuating force	14 N
Product weight	151 g
Mounting type	with through hole
Auxiliary pilot air port 12/14	M5
Pneumatic connection, port 1	1/8 NPT
Pneumatic connection, port 2	1/8 NPT
Pneumatic connection, port 3	1/8 NPT
Pneumatic connection, port 4	1/8 NPT
Pneumatic connection, port 5	1/8 NPT
Materials note	Conforms to RoHS
Material cover	PA-reinforced
Material seals	NBR
Material housing	Anodised wrought aluminium alloy