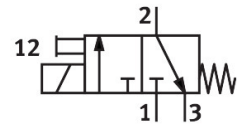
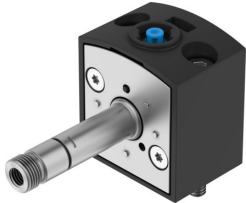


Solenoid valve VSCS-B-M32C-MT-WB-F8

Part number: 8028541

FESTO



Data sheet

Feature	Value
Valve function	3/2, closed, monostable
Actuation type	Electrical
Width	30 mm
Standard nominal flow rate	34 l/min
Pneumatic working port	Sub-base, size 30 mm as per ISO 15218
Operating pressure	0.2 MPa...1 MPa 2 bar...10 bar 29 psi...145 psi
Structural design	Sub base valve
Reset method	Mechanical spring
Degree of protection	IP65
Sealing principle	Soft
Mounting position	Any
Conforms to standard	ISO 15218
Manual override	Detenting via accessory Non-detenting
Type of control	Direct
Flow direction	Non-reversible
Lap	Underlap
Note on forced dynamization	Switching frequency at least once a week
Max. switching frequency	5 Hz
Switching time off	8 ms
On switching time	8 ms
Duty cycle	100%
Max. positive test pulse with 0 signal	3 ms
Max. negative test pulse on 1 signal	3.4 ms
Operating medium	Compressed air as per ISO 8573-1:2010 [7:4:4]
Information on operating and pilot media	Operation with oil lubrication possible (required for further use)
Vibration resistance	Transport application test with severity level 2 as per FN 942017-4 and EN 60068-2-6
Shock resistance	Shock test with severity level 2 as per FN 942017-5 and EN 60068-2-27
Corrosion resistance class (CRC)	1 - Low corrosion stress

Feature	Value
LABS (PWIS) conformity	VDMA24364-B1/B2-L
Temperature of medium	-10 °C...50 °C
Ambient temperature	-10 °C...50 °C
Type of mounting	CNOMO
Note on materials	RoHS-compliant
Seals material	NBR