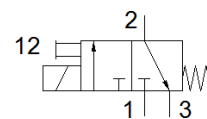
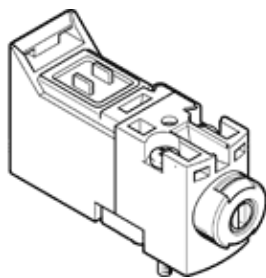


# Solenoid valve

## MHA1-M1AR-3/2G-0,6-P3

Part number: 8025226

FESTO



### Data sheet

Feature	Value
Valve function	3/2 closed, monostable
Type of actuation	electrical
Width	10 mm
Standard nominal flow rate	10 l/min
Working pressure	0.15 ... 0.8 MPa
Design structure	Poppet valve with spring return
Type of reset	mechanical spring
Protection class	IP40
Certificate issuing department	UL MH19482
Nominal size	0.65 mm
Grid dimension	10 mm
Exhaust-air function	throttleable
Sealing principle	soft
Assembly position	Any
Manual override	detenting Pushing
Type of piloting	direct
Flow direction	non reversible
Lap	Underlap
Note on forced dynamisation	Switching frequency at least once a week
Maximum switching frequency	10 Hz
Switching time off	10 ms
Switching time on	5 ms
Duty cycle	100 %
Electrical power consumption	1 VA
Characteristic coil data	24 V AC: 50/60 Hz, pick-up power 1 VA, holding power 1 VA
Permissible voltage fluctuation	+/- 10 %
Operating medium	Compressed air in accordance with ISO8573-1:2010 [7:4:4]
Note on operating and pilot medium	Lubricated operation possible (subsequently required for further operation)
Vibration resistance	Transport application test at severity level 2 in accordance with FN 942017-4 and EN 60068-2-6
Shock resistance	Shock test with severity level 2 in accordance with FN 942017-5 and EN 60068-2-27
Corrosion resistance classification CRC	2 - Moderate corrosion stress
Storage temperature	-20 ... 60 °C
Medium temperature	-5 ... 50 °C
Ambient temperature	-5 ... 50 °C
Product weight	10 g
Electrical connection	Via electrical connection plate
Mounting type	On subbase with through hole
Pneumatic connection, port 1	Subbase
Pneumatic connection, port 2	Subbase
Pneumatic connection, port 3	Subbase
Materials note	Conforms to RoHS

Feature	Value
Material seals	FPM HNBR NBR
Material housing	PA-reinforced PPS-reinforced