

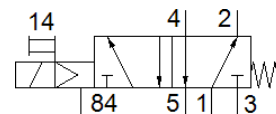
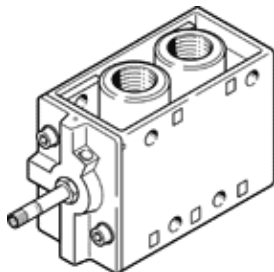
Solenoid valve

MFH-5-1/2

Part number: 6420

FESTO

With manual override, without solenoid coil or socket. Solenoid coil and socket should be ordered separately.



Data sheet

Feature	Value
Valve function	5/2 monostable
Type of actuation	electrical
Width	52 mm
Standard nominal flow rate	3,700 l/min
Operating pressure MPa	0.2 ... 0.8 MPa
Working pressure	2 ... 8 bar
Design structure	Poppet seat
Type of reset	mechanical spring
Authorization	c UL us - Recognized (OL)
Protection class	IP65
Nominal size	14 mm
Grid dimension	69 mm
Exhaust-air function	throttleable
Sealing principle	soft
Assembly position	Any
Manual override	detenting
Type of piloting	Piloted
Flow direction	non reversible
Lap	Underlap
b value	0.32
Switching time off	150 ms
Switching time on	21 ms
Max. positive test pulse with logic 0	2,200 µs
Max. negative test pulse with logic 1	3,700 µs
Characteristic coil data	See solenoid coil, to be ordered separately
Operating medium	Compressed air in accordance with ISO8573-1:2010 [7:4:4]
Note on operating and pilot medium	Lubricated operation possible (subsequently required for further operation)
Corrosion resistance classification CRC	1 - Low corrosion stress
PWIS conformity	VDMA24364-B1/B2-L
Storage temperature	-20 ... 60 °C
Medium temperature	-10 ... 60 °C
Ambient temperature	-5 ... 40 °C
Product weight	1,135 g
Electrical connection	Via F coil, must be ordered separately
Mounting type	on manifold rail with through hole Optional
Pilot exhaust port 84	M5
Pneumatic connection, port 1	G1/2
Pneumatic connection, port 2	G1/2
Pneumatic connection, port 3	G1/2
Pneumatic connection, port 4	G1/2

Feature	Value
Pneumatic connection, port 5	G1/2
Materials note	Conforms to RoHS
Material seals	NBR TPE-U(PU)
Material housing	Aluminum die cast