

# Solenoid valve

## CJM-5/2-1/4-CH

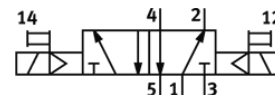
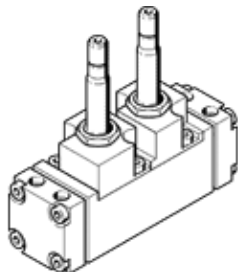
Part number: 5955

Classic - do not use for new projects

FESTO

With plug socket and manual override, without subbase

Modern alternatives can be found by entering the first four characters of the type code in the search field.



## Data sheet

Feature	Value
Valve function	5/2 bistable
Type of actuation	electrical
Standard nominal flow rate	1,400 l/min
Working pressure	1.5 ... 10 bar
Nominal size	6.5 mm
Assembly position	Any
Manual override	Pushing
Type of piloting	Piloted
Flow direction	non reversible
Max. switching frequency	40 Hz
Switching time on	28 ms
Operating medium	Compressed air in accordance with ISO8573-1:2010 [7:4:4]
Note on operating and pilot medium	Lubricated operation possible (subsequently required for further operation)
PWIS conformity	VDMA24364 zone III
Medium temperature	-10 ... 60 °C
Mounting type	On subbase
Pilot air port 12	G1/8
Pilot air port 14	G1/8
Pneumatic connection, port 1	G1/4
Pneumatic connection, port 2	G1/4
Pneumatic connection, port 3	G1/4
Pneumatic connection, port 4	G1/4
Pneumatic connection, port 5	G1/4
Material seals	NBR
Material housing	Wrought Aluminum alloy
Material membrane	PUR