

# Solenoid valve

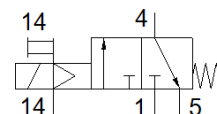
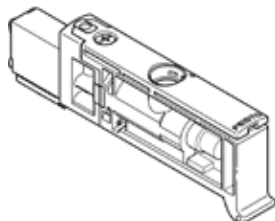
## VUVB-ST12-M32C-MZH-QX-1T1

Part number: 575997

Classic - do not use for new projects

FESTO

Modern alternatives can be found by entering the first four characters of the type code in the search field.



## Data sheet

Feature	Value
Valve function	3/2 closed, monostable
Type of actuation	electrical
Valve size	12 mm
Standard nominal flow rate	240 ... 400 l/min
Operating pressure MPa	0.2 ... 0.8 MPa
Working pressure	2 ... 8 bar
Design structure	Poppet valve with spring return
Protection class	IP65
Nominal size	4 mm
Exhaust-air function	not throttleable
Sealing principle	soft
Assembly position	Any
Manual override	Pushing
Type of piloting	Piloted
Pilot air supply	external
Flow direction	non reversible
Note on working pressure	0 - 0.8 MPa with external pilot air 0 - 8 bar with external pilot air
Pilot pressure MPa	0.2 ... 0.8 MPa
Pilot pressure	2 ... 8 bar
Switching time off	14 ms
Switching time on	6 ms
Duty cycle	100 %
Max. positive test pulse with logic 0	800 µs
Max. negative test pulse with logic 1	300 µs
Characteristic coil data	24 V DC: 1 W
Permissible voltage fluctuation	+/- 10 %
Operating medium	Compressed air in accordance with ISO8573-1:2010 [7:4:4]
Note on operating and pilot medium	Lubricated operation possible (subsequently required for further operation)
Vibration resistance	Transport application test with severity level 1 as per FN 942017-4 and EN 60068-2-6
Shock resistance	Shock test with severity level 1 in accordance with FN 942017-5 and EN 60068-2-27
Corrosion resistance classification CRC	0 - No corrosion stress
PWIS conformity	VDMA24364-B1/B2-L
Medium temperature	-5 ... 60 °C
Sound pressure level	85 dB(A)
Ambient temperature	-5 ... 60 °C
Product weight	26.3 g
Electrical connection	via manifold block
Mounting type	On subbase
Auxiliary pilot air port 14	Subbase

Feature	Value
Pneumatic connection, port 1	Subbase
Pneumatic connection, port 3	Subbase
Pneumatic connection, port 5	Subbase
Materials note	Conforms to RoHS
Material seals	NBR TPE-U(PU)
Material housing	PA-reinforced
Material Piston slide	Wrought Aluminum alloy