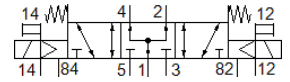
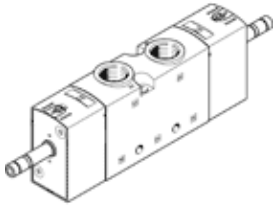


Solenoid valve

VUVS-L30-P53U-MZD-G38-F8

Part number: 575624

FESTO



Data sheet

Feature	Value
Valve function	5/3 pressurized
Type of actuation	electrical
Valve size	31 mm
Standard nominal flow rate	1,600 l/min
Operating pressure MPa	-0.09 ... 1 MPa
Working pressure	-0.9 ... 10 bar
Design structure	Piston slide
Type of reset	mechanical spring
Authorization	c UL us - Recognized (OL)
Maritime classification	see certificate
Certificate issuing department	DNVGL-TAA000011J
Nominal size	8.1 mm
Exhaust-air function	throttleable
Sealing principle	soft
Assembly position	Any
Manual override	detenting Pushing
Type of piloting	Piloted
Pilot air supply	external
Flow direction	reversible
Lap	Positive overlap
Pilot pressure MPa	0.25 ... 1 MPa
Pilot pressure	2.5 ... 10 bar
b value	0.4
C value	6.6 l/sbar
Switching time off	75 ms
Switching time on	18 ms
Switching time reversal	31 ms
Max. positive test pulse with logic 0	2,000 µs
Max. negative test pulse with logic 1	3,600 µs
Operating medium	Compressed air in accordance with ISO8573-1:2010 [7:4:4]
Note on operating and pilot medium	Lubricated operation possible (subsequently required for further operation)
Vibration resistance	Transport application test at severity level 2 in accordance with FN 942017-4 and EN 60068-2-6
Shock resistance	Shock test with severity level 2 in accordance with FN 942017-5 and EN 60068-2-27
Corrosion resistance classification CRC	2 - Moderate corrosion stress
Medium temperature	-10 ... 60 °C
Pilot medium	Compressed air in accordance with ISO8573-1:2010 [7:4:4]
Ambient temperature	-10 ... 60 °C
Product weight	461 g
Mounting type	on manifold rail with through hole Optional
Scavenging orifice connection	Non-ducted

Feature	Value
Pilot exhaust port 82	M5
Pilot exhaust port 84	M5
Pilot air port 12	G1/8
Pilot air port 14	G1/8
Pneumatic connection, port 1	G3/8
Pneumatic connection, port 2	G3/8
Pneumatic connection, port 3	G3/8
Pneumatic connection, port 4	G3/8
Pneumatic connection, port 5	G3/8
Materials note	Conforms to RoHS
Material seals	HNBR NBR
Material housing	Aluminum die cast Painted
Material Piston slide	Wrought Aluminum alloy
Material screws	Steel, nickel-plated