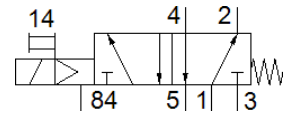
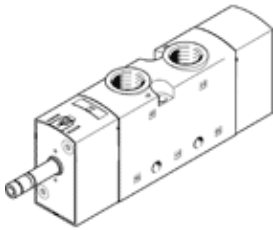


Solenoid valve

VUVS-L25-M52-MD-G14-F8

Part number: 575509

FESTO



Data sheet

| Feature | Value |
|---|--|
| Valve function | 5/2 monostable |
| Type of actuation | electrical |
| Valve size | 26.5 mm |
| Standard nominal flow rate | 1,300 l/min |
| Operating pressure MPa | 0.25 ... 1 MPa |
| Working pressure | 2.5 ... 10 bar |
| Design structure | Piston slide |
| Type of reset | mechanical spring |
| Authorization | c UL us - Recognized (OL) |
| Maritime classification | see certificate |
| Certificate issuing department | DNVGL-TAA000011J |
| Nominal size | 6.9 mm |
| Exhaust-air function | throttleable |
| Sealing principle | soft |
| Assembly position | Any |
| Manual override | detenting Pushing |
| Type of piloting | Piloted |
| Pilot air supply | Internal |
| Flow direction | non reversible |
| Lap | Positive overlap |
| b value | 0.4 |
| C value | 5.3 l/sbar |
| Switching time off | 47 ms |
| Switching time on | 12 ms |
| Max. positive test pulse with logic 0 | 2,000 µs |
| Max. negative test pulse with logic 1 | 3,600 µs |
| Operating medium | Compressed air in accordance with ISO8573-1:2010 [7:4:4] |
| Note on operating and pilot medium | Lubricated operation possible (subsequently required for further operation) |
| Vibration resistance | Transport application test at severity level 2 in accordance with FN 942017-4 and EN 60068-2-6 |
| Shock resistance | Shock test with severity level 2 in accordance with FN 942017-5 and EN 60068-2-27 |
| Corrosion resistance classification CRC | 2 - Moderate corrosion stress |
| PWIS conformity | VDMA24364-B1/B2-L |
| Medium temperature | -10 ... 60 °C |
| Pilot medium | Compressed air in accordance with ISO8573-1:2010 [7:4:4] |
| Ambient temperature | -10 ... 60 °C |
| Product weight | 311 g |
| Mounting type | on manifold rail with through hole Optional |
| Scavenging orifice connection | Non-ducted |
| Pilot exhaust port 84 | M5 |
| Pneumatic connection, port 1 | G1/4 |

| Feature | Value |
|------------------------------|------------------------------|
| Pneumatic connection, port 2 | G1/4 |
| Pneumatic connection, port 3 | G1/4 |
| Pneumatic connection, port 4 | G1/4 |
| Pneumatic connection, port 5 | G1/4 |
| Materials note | Conforms to RoHS |
| Material seals | HNBR NBR |
| Material housing | Aluminum die cast Painted |
| Material Piston slide | Wrought Aluminum alloy |
| Material screws | Galvanized steel |