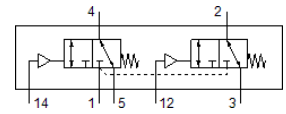
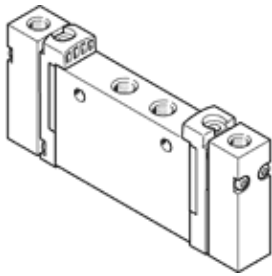


Pneumatic valve VUWG-L10-T32C-M-M5

Part number: 574251

FESTO



Data sheet

| Feature | Value |
|---|---|
| Valve function | 2x3/2 closed, monostable |
| Type of actuation | pneumatic |
| Valve size | 10 mm |
| Standard nominal flow rate | 135 l/min |
| Working pressure | -0.9 ... 10 bar |
| Design structure | Piston slide |
| Type of reset | mechanical spring |
| Grid dimension | 10.5 mm |
| Exhaust-air function | throttleable |
| Sealing principle | soft |
| Assembly position | Any |
| Manual override | None |
| Type of piloting | direct |
| Flow direction | reversible |
| Lap | Positive overlap |
| Pilot pressure | 3 ... 10 bar |
| Suitability for vacuum | Yes |
| Switching time off | 7 ms |
| Switching time on | 6 ms |
| Operating medium | Compressed air in accordance with ISO8573-1:2010 [7:4:4] |
| Note on operating and pilot medium | Lubricated operation possible (subsequently required for further operation) |
| Corrosion resistance classification CRC | 2 - Moderate corrosion stress |
| PWIS conformity | VDMA24364-B1/B2-L |
| Medium temperature | -5 ... 50 °C |
| Pilot medium | Compressed air in accordance with ISO8573-1:2010 [7:4:4] |
| Ambient temperature | -5 ... 60 °C |
| Product weight | 51 g |
| Mounting type | On PR manifold with through hole Optional |
| Pilot air port 12 | M5 |
| Pilot air port 14 | M5 |
| Pneumatic connection, port 1 | M5 |
| Pneumatic connection, port 2 | M5 |
| Pneumatic connection, port 3 | M5 |
| Pneumatic connection, port 4 | M5 |
| Pneumatic connection, port 5 | M5 |
| Materials note | Conforms to RoHS |
| Material seals | HNBR NBR |
| Material housing | Aluminum Anodized |