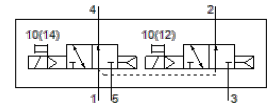
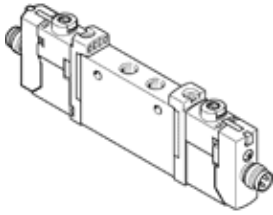


# Solenoid valve

## VUVG-L10-T32U-AT-M7-1R8L

Part number: 574219

FESTO



## Data sheet

Feature	Value
Valve function	2x3/2 open, monostable
Type of actuation	electrical
Valve size	10 mm
Standard nominal flow rate	170 ... 190 l/min
Operating pressure MPa	0.15 ... 0.8 MPa
Working pressure	1.5 ... 8 bar
Design structure	Piston slide
Type of reset	Air spring
Authorization	RCM Mark c UL us - Recognized (OL)
Protection class	IP65 with plug socket
Nominal size	2.7 mm
Exhaust-air function	throttleable
Sealing principle	soft
Assembly position	Any
Manual override	detenting Pushing Covered
Type of piloting	Piloted
Pilot air supply	Internal
Lap	Positive overlap
Pilot pressure MPa	0.15 ... 0.8 MPa
Pilot pressure	1.5 ... 8 bar
Suitability for vacuum	No
Switching time off	15 ms
Switching time on	6 ms
Duty cycle	100 %
Max. positive test pulse with logic 0	700 µs
Max. negative test pulse with logic 1	900 µs
Characteristic coil data	24 V DC: 1 W
Permissible voltage fluctuation	+/- 10 %
Operating medium	Compressed air in accordance with ISO8573-1:2010 [7:4:4]
Note on operating and pilot medium	Lubricated operation possible (subsequently required for further operation)
Vibration resistance	Transport application test at severity level 2 in accordance with FN 942017-4 and EN 60068-2-6
Restriction ambient and medium temperature	Without holding current reduction -5 - 50 °C
Shock resistance	Shock test with severity level 2 in accordance with FN 942017-5 and EN 60068-2-27
Corrosion resistance classification CRC	2 - Moderate corrosion stress
PWIS conformity	VDMA24364-B1/B2-L
Medium temperature	-5 ... 60 °C
Ambient temperature	-5 ... 60 °C
Product weight	55 g

Feature	Value
Electrical connection	Via electrical connection plate
Mounting type	on manifold rail with through hole Optional
Pneumatic connection, port 1	M7
Pneumatic connection, port 2	M7
Pneumatic connection, port 3	M7
Pneumatic connection, port 4	M7
Pneumatic connection, port 5	M7
Materials note	Conforms to RoHS
Material seals	HNBR NBR
Material housing	Wrought Aluminum alloy