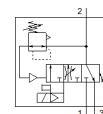
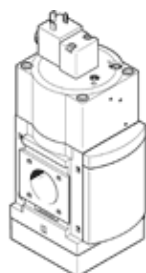


Soft start/quick exhaust valve MS9-SV-G-C-V24-S-VS

Part number: 570737

FESTO

For the soft-start and quick exhaust of system components.



Data sheet

Feature	Value
Series	MS
Size	9
Grid dimension	90 mm
Safety function	Exhausting
Performance level (PL)	Exhausting / up to Category 1, Performance Level c
Design structure	Piston slide
Type of actuation	electrical
Sealing principle	soft
Exhaust-air function	not throttleable
Manual override	None
Type of reset	mechanical spring
Type of piloting	Piloted
Valve function	3/2 closed, monostable Pressure build-up function
Operating pressure MPa	0.35 ... 1.6 MPa
Working pressure	3.5 ... 16 bar
Standard nominal flow rate	8,300 ... 16,550 l/min
Standard flow rate exhaust 0.6->0 MPa (6->0 bar, 87->0 psi)	19,730 ... 21,720 l/min
Duty cycle	100 %
Characteristic coil data	24 V DC: 8.4 W
Nominal operating voltage DC	24 V
Permissible voltage fluctuation	+/- 10 %
Operating medium	Compressed air in accordance with ISO8573-1:2010 [7:4:4]
Note on operating and pilot medium	Lubricated operation possible (subsequently required for further operation)
Corrosion resistance classification CRC	2 - Moderate corrosion stress
Materials note	Conforms to RoHS
PWIS conformity	VDMA24364-B1/B2-L
Sound pressure level	93 dB(A)
Protection class	IP65
Medium temperature	0 ... 60 °C
Ambient temperature	0 ... 60 °C
Storage temperature	0 ... 60 °C
Shock resistance	Shock test with severity level 1 in accordance with FN 942017-5 and EN 60068-2-27
Vibration resistance	Transport application test with severity level 1 as per FN 942017-4 and EN 60068-2-6
CE symbol (see declaration of conformity)	according to EU-EMV guideline according to EU machines guideline in accordance with EU RoHS directive
UKCA marking (see declaration of conformity)	To UK instructions for EMC To UK instructions for machines To UK RoHS instructions
Mounting type	Line installation

Feature	Value
	with accessories Optional
Assembly position	Any
Product weight	3,200 g
Pressure gauge connection	G1/8 G1/4
Pneumatic connection, port 3	G1 1 NPT
Electrical connection	Plug pattern type A to EN 175301-803 Plug to EN 175301-803 Cubic design
Material housing	Aluminum die cast
Material seals	NBR
Material Piston slide	Brass
Material cover	Wrought Aluminum alloy
Material underneath cover	PA