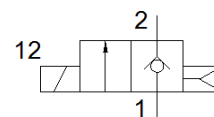


Solenoid valve

MHJ10-S-2,5-QS-1/4-HF-U

Part number: 567504

FESTO



Data sheet

Feature	Value
Valve function	2/2 closed, monostable
Type of actuation	electrical
Width	10 mm
Standard nominal flow rate	160 l/min
Operating pressure MPa	0.05 ... 0.6 MPa
Working pressure	0.5 ... 6 bar
Design structure	Poppet valve without spring return
Type of reset	Air spring
Protection class	IP55
Authorization	RCM Mark
CE symbol (see declaration of conformity)	according to EU-EMV guideline in accordance with EU RoHS directive
UKCA marking (see declaration of conformity)	To UK instructions for EMC To UK RoHS instructions
Grid dimension	10.5 mm
Operating conditions to DIN VDE 0580	S3 50% 20 min. with individual valve S3 25% 20 min. with block mounting
Note on operation	Power supply unit must be able to supply at least 1.7 A without voltage drop Do not operate without flow
Sealing principle	Hard
Assembly position	Any
Manual override	None
Type of piloting	direct
Flow direction	non reversible
Polarity protected	for operating voltage
Additional functions	Spark arresting Reduction of holding current with energy recovery Safety shut-off
b value	0.36
C value	0.66 l/sbar
Maximum switching frequency	500 Hz
Switching time on at 0.4 MPa (4 bar, 58 psi) and 24 V in new condition	1.2 ms
Switching time off at 0.4 MPa (4 bar, 58 psi) and 24 V in new condition	0.6 ms
Switching time on at 0.05 MPa (0.5 bar, 7.25 psi) and 24 V in new condition	1 ms
Switching time off at 0.05 MPa (0.5 bar, 7.25 psi) and 24 V in new condition	0.8 ms
Switching time on at 0.6 MPa (6 bar, 87 psi) and 24 V in new condition	1.3 ms
Switching time off at 0.6 MPa (6 bar, 87 psi) and 24 V in new condition	0.6 ms
Tolerance for Switching time OFF	+15 %/-25 %
Tolerance for Switching time ON	+/-15 %
Operating voltage range DC	21.6 ... 26.4 V
Input resistance	34 kOhm
Characteristic coil data	24 V DC: low-current phase 3.2 W, high-current phase 14.5 W
Trigger signal range DC	3 ... 30 V
Note on feeder current	Linear rise 0.09 - 0.44 mA with a trigger signal of 3 - 15 V

Feature	Value
	0.44-15.44 mA with a trigger signal of 15-30 V
Permissible voltage fluctuation	+/- 10 %
Operating medium	Compressed air in accordance with ISO8573-1:2010 [7:4:4]
Note on operating and pilot medium	Lubricated operation not possible
Restriction ambient and medium temperature	related to switching frequency
Corrosion resistance classification CRC	2 - Moderate corrosion stress
PWIS conformity	VDMA24364-B2-L
Storage temperature	-20 ... 50 °C
Max. permissible solenoid surface temperature	120 °C
Medium temperature	-5 ... 60 °C
Ambient temperature	-5 ... 60 °C
Product weight	85 g
Electrical connection	3-core Cable
Cable length	2.5 m
Mounting type	Line installation with through hole Optional
Pneumatic connection, port 1	QS-1/4
Pneumatic connection, port 2	QS-1/4
Materials note	Conforms to RoHS
Material seals	HNBR
Material housing	PA-reinforced PPS-reinforced
Material cable sheath	PUR
Material screws	Steel