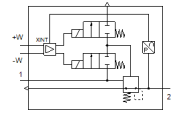
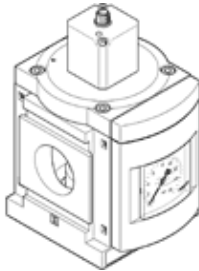


Pressure regulator MS12-LR-G-PE6

Part number: 564888

FESTO

To control pressure in pneumatic control circuits.



Data sheet

Feature	Value
Size	12
Series	MS
Assembly position	Any
Design structure	Pilot actuated diaphragm regulator
Controller function	Output pressure constant with initial pressure compensation with secondary exhaust with return flow
Pressure gauge	with pressure gauge
Operating pressure MPa	0.115 ... 0.8 MPa
Working pressure	1.15 ... 8 bar
Pressure regulation range	0.15 ... 6 bar
Max. pressure hysteresis (MPa)	0.004 MPa
Max. pressure hysteresis	0.04 bar 0.58 psi
Flow rate, secondary venting	≤ 600 l/min
Standard nominal flow rate	12,000 ... 21,000 l/min
Operating voltage range DC	21.6 ... 26.4 V
Max. electrical power consumption	3.6 W
Max. current consumption	0.15 A
Nominal operating voltage DC	24 V
Residual ripple	10 %
Signal range, analog input	0 - 10 V
KC mark	KC-EMV
CE symbol (see declaration of conformity)	according to EU-EMV guideline in accordance with EU RoHS directive
UKCA marking (see declaration of conformity)	To UK instructions for EMC To UK RoHS instructions
Operating medium	Compressed air in accordance with ISO8573-1:2010 [7:4:4] Inert gases
Corrosion resistance classification CRC	2 - Moderate corrosion stress
PWIS conformity	VDMA24364-B1/B2-L
Storage temperature	-10 ... 60 °C
Medium temperature	10 ... 50 °C
Protection class	IP65
Ambient temperature	10 ... 50 °C
Product weight	4,000 g
Mounting type	Line installation With mounting bracket Optional
Pneumatic connection, port 1	Subbase
Pneumatic connection, port 2	Subbase
Material of cover	PA
Materials note	Conforms to RoHS

Feature	Value
Material underneath cover	Wrought Aluminum alloy
Material seals	NBR
Material spring	Spring steel
Material housing	Aluminum die cast
Material membrane	NBR
Material valve stem	Wrought Aluminum alloy NBR High alloy steel, non-corrosive