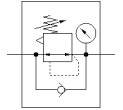
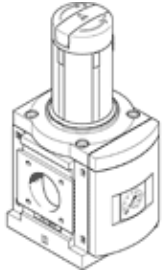


# Pressure regulator MS9-LR-NG-D6-DI-AG-PSI-AS

Part number: 564142

FESTO

7 bar maximum output pressure, with pressure gauge, lockable regulator head, direction of flow: from left to right.



## Data sheet

| Feature                                 | Value  |
|---|--|
| Size                                    | 9  |
| Series                                  | MS   |
| Actuator lock                           | Rotary knob with lock<br>with accessories, lockable  |
| Assembly position                       | Any  |
| Design structure                        | directly-controlled diaphragm regulator  |
| Controller function                     | Output pressure constant<br>with initial pressure compensation<br>with secondary exhaust<br>with return flow |
| Pressure gauge                          | with pressure gauge  |
| Working pressure                        | 1 ... 20 bar   |
| Pressure regulation range               | 0.5 ... 7 bar  |
| Max. pressure hysteresis                | 0.4 bar  |
| Explosion-proof ambient temperature     | -10°C ≤ Ta ≤ +60°C   |
| Operating medium                        | Compressed air in accordance with ISO8573-1:2010 [7:4:4]<br>Inert gases                                      |
| Note on operating and pilot medium      | Lubricated operation possible (subsequently required for further operation)                                  |
| Corrosion resistance classification CRC | 2 - Moderate corrosion stress  |
| PWIS conformity                         | VDMA24364-B1/B2-L  |
| Storage temperature                     | -10 ... 60 °C  |
| Medium temperature                      | -10 ... 60 °C  |
| Ambient temperature                     | -10 ... 60 °C  |
| Product weight                          | 1,400 g  |
| Mounting type                           | Front panel installation<br>Line installation<br>with accessories<br>Optional                                |
| Material of cover                       | PA-reinforced  |
| Materials note                          | Conforms to RoHS   |
| Material of connecting plate            | Aluminum die cast  |
| Material mounting bracket               | Aluminum die cast  |
| Material housing                        | Aluminum die cast  |
| Material module connector               | Aluminum die cast  |
| Material membrane                       | NBR  |
| Material valve stem                     | Wrought Aluminum alloy<br>NBR<br>POM   |