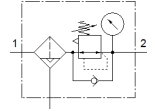


Filter regulator MS9-LFR-G-D6-EUV-AG-BAR-AS

Part number: 564111

FESTO

Maximum output pressure 7 bar, 40 µm filter, with pressure gauge, lockable regulator head, metal bowl guard, fully automatic condensate drain, flow direction from left to right.



Data sheet

| Feature | Value |
|-----------------------------------------|--------------------------------------------------------------------------------------------------------------|
| Size | 9 |
| Series | MS |
| Actuator lock | with accessories, lockable |
| Assembly position | Vertical +/- 5° |
| Grade of filtration | 40 µm |
| Condensate drain | fully automatic |
| Design structure | Pilot-actuated filter diaphragm regulator |
| Max. condensate volume | 220 ml |
| Controller function | Output pressure constant with initial pressure compensation with secondary exhaust with return flow |
| Pressure gauge | with pressure gauge |
| Working pressure | 2 ... 12 bar |
| Pressure regulation range | 0.5 ... 7 bar |
| Max. pressure hysteresis | 0.4 bar |
| Explosion-proof ambient temperature | -10°C ≤ Ta ≤ +60°C |
| Operating medium | Compressed air in accordance with ISO8573-1:2010 [7:4:-] Inert gases |
| Corrosion resistance classification CRC | 2 - Moderate corrosion stress |
| PWIS conformity | VDMA24364-B1/B2-L |
| Storage temperature | 5 ... 60 °C |
| Air purity class at output | Compressed air in accordance with ISO8573-1:2010 [7:4:4] |
| Medium temperature | -10 ... 60 °C |
| Ambient temperature | -10 ... 60 °C |
| Product weight | 2,400 g |
| Mounting type | Line installation with accessories Optional |
| Material of cover | PA-reinforced |
| Material of spin disc | POM |
| Material of filter holder | POM |
| Materials note | Conforms to RoHS |
| Material of connecting plate | Aluminum die cast |
| Material mounting bracket | Aluminum die cast |
| Material filter | PE |
| Material housing | Aluminum die cast |
| Material module connector | Aluminum die cast |
| Material membrane | NBR |
| Material bowl | Wrought Aluminum alloy |
| Material cup seal | NBR |
| Material screen | PA |
| Material separating plate | POM |
| Material valve stem | Wrought Aluminum alloy NBR POM |