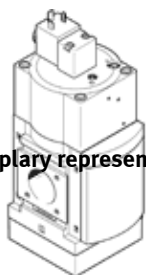


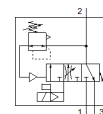
# Soft start/quick exhaust valve MS9-SV

Part number: 562176

FESTO



Exemplary representation



## Data sheet

Overall data sheet – Individual values depend upon your configuration.

Feature	Value
Series	MS
Size	9
Grid dimension	90 mm
Safety function	Exhausting
Performance level (PL)	Exhausting / up to Category 1, Performance Level c
Design structure	Piston slide
Type of actuation	electrical
Sealing principle	soft
Exhaust-air function	not throttleable
Manual override	None On pilot-solenoid valves: non-detenting with pressure build-up and exhaust valve: detenting, self-resetting
Type of reset	mechanical spring
Type of piloting	Piloted
Valve function	3/2 closed, monostable Pressure build-up function
Operating pressure MPa	0.35 ... 1.6 MPa
Working pressure	3.5 ... 16 bar
Pressure gauge	Prepared for G1/4 Prepared for G1/8 Red/green scale with pressure sensor with pressure gauge With operational status indicator
Standard nominal flow rate	8,300 ... 16,550 l/min
Duty cycle	100 %
Characteristic coil data	110 V AC: 50/60 Hz, pick-up power 14.5 VA, holding power 10.5 VA 230 V AC: 50/60 Hz, pick-up power 14.5 VA, holding power 10.5 VA 24 V DC: 2.7 W 24 V DC: 8.4 W
Nominal operating voltage DC	110 V 230 V 24 V
Permissible voltage fluctuation	+/- 10 %
Operating medium	Compressed air in accordance with ISO8573-1:2010 [7:4:4]
Note on operating and pilot medium	Lubricated operation possible (subsequently required for further operation)
Corrosion resistance classification CRC	2 - Moderate corrosion stress
Materials note	Conforms to RoHS
PWIS conformity	VDMA24364-B1/B2-L
Protection class	IP65
Medium temperature	0 ... 60 °C
Ambient temperature	0 ... 60 °C
Storage temperature	0 ... 60 °C

<b>Feature</b>	<b>Value</b>
Shock resistance	Shock test with severity level 1 in accordance with FN 942017-5 and EN 60068-2-27
Vibration resistance	Transport application test with severity level 1 as per FN 942017-4 and EN 60068-2-6
Authorization	c UL us - Recognized (OL)
CE symbol (see declaration of conformity)	according to EU-EMV guideline according to EU machines guideline in accordance with EU RoHS directive
UKCA marking (see declaration of conformity)	To UK instructions for EMC To UK instructions for machines To UK RoHS instructions
Mounting type	Line installation with accessories Optional
Assembly position	Any
Pressure gauge connection	G1/8 G1/4
Electrical connection	Plug pattern type A to EN 175301-803 Plug to EN 175301-803 Cubic design
Material housing	Aluminum die cast
Material seals	NBR
Material Piston slide	Brass
Material cover	Wrought Aluminum alloy
Material underneath cover	PA