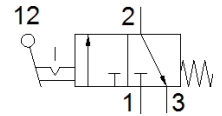
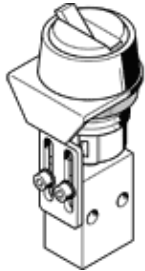


Toggle lever valve H-3-M5

Part number: 561616

FESTO

This type is suitable for vacuum.



Data sheet

Feature	Value
Valve function	3/2 closed, monostable
Type of actuation	manual
Width	22.5 mm
Standard nominal flow rate	80 l/min
Working pressure	-0.95 ... 8 bar
Design structure	Piston seat
Type of reset	mechanical spring
Nominal size	2 mm
Assembly position	Any
Type of piloting	direct
Operating medium	Compressed air in accordance with ISO8573-1:2010 [7:-:-]
Note on operating and pilot medium	Lubricated operation possible (subsequently required for further operation)
Corrosion resistance classification CRC	1 - Low corrosion stress
Medium temperature	-10 ... 60 °C
Ambient temperature	-10 ... 60 °C
Actuating force	14 N
Product weight	419 g
Mounting type	with through hole
Pneumatic connection, port 1	M5
Pneumatic connection, port 2	M5
Material seals	NBR
Material housing	Wrought Aluminum alloy Anodized