

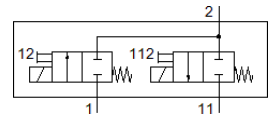
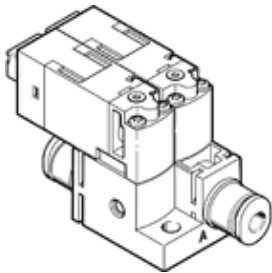
Vacuum valve

MHA1-2X2/2G-1,5-4-4-3

Part number: 560372

FESTO

to be mounted with a screw on any flat surface.



Data sheet

Feature	Value
Valve function	2x2/2 closed, monostable
Type of actuation	electrical
Width	20 mm
Standard nominal flow rate	30 l/min
Working pressure	0 ... 1.5 bar
Type of reset	mechanical spring
Protection class	IP40
CE symbol (see declaration of conformity)	according to EU-EMV guideline in accordance with EU RoHS directive
UKCA marking (see declaration of conformity)	To UK instructions for EMC To UK RoHS instructions
Nominal size	1.5 mm
Grid dimension	20 mm
Exhaust-air function	not throttleable
Sealing principle	soft
Assembly position	Any
Manual override	Pushing
Type of piloting	direct
Flow direction	non reversible
Signal status display	LED
Working pressure, reversible	-0.95 ... 0 bar
Suitability for vacuum	Yes
Standard flow rate	30 l/min
Maximum switching frequency	10 Hz
Switching time off	6 ms
Switching time on	6 ms
Duty cycle	100 %
Characteristic coil data	24 V DC: low-current phase 0.7 W, high-current phase 3 W
Permissible voltage fluctuation	+/- 10 %
Operating medium	Compressed air in accordance with ISO8573-1:2010 [7:4:4]
Note on operating and pilot medium	Lubricated operation possible (subsequently required for further operation)
Vibration resistance	Transport application test at severity level 2 in accordance with FN 942017-4 and EN 60068-2-6
Shock resistance	Shock test with severity level 2 in accordance with FN 942017-5 and EN 60068-2-27
Corrosion resistance classification CRC	2 - Moderate corrosion stress
PWIS conformity	VDMA24364-B2-L
Storage temperature	-20 ... 60 °C
Medium temperature	-5 ... 50 °C
Ambient temperature	-5 ... 50 °C
Product weight	30.6 g
Max. line length	30 m
Electrical connection	Plug KMH

Feature	Value
Mounting type	with through hole
Pneumatic connection, port 1	QS-4
Pneumatic connection, 11	QS-4
Pneumatic connection, port 2	QS-3
Materials note	Conforms to RoHS
Material seals	FPM HNBR NBR
Material housing	PA-reinforced PPS-reinforced
Material screws	Steel